

Berger Realty

Since 1928



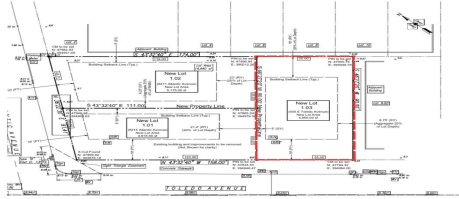
Berger Realty, Inc
1330 Bay Avenue
Ocean City, NJ 08226
609-391-1330/609-391-1300
info@bergerrealty.com



405 Toledo, 1.03, Wildwood Crest, NJ, 08260

Price \$1,690,000.00

PROPERTY DETAILS



Total Rooms	
Bedrooms	0
Baths Full	0
Baths Half	0
Year Built	
Type	Residential Vacant Lot
Block Number	126
Listing #	250474
Taxes	9999999.00

COMMENTS

Premier Beach Block opportunity in the desirable "South End" of Wildwood Crest! Currently the Ala Kai II Motel, this property can accommodate 3 single family homes each sitting on larger sized lots, pending a subdivision approval. Proposed lot size of this lot will be (lot 1.03) 55x90. This beach block property will have tremendous water views, be a short stroll to the b...

PROPERTY FEATURES

CONTACT



Ask for Joan S. Spencer
Berger Realty Inc
1330 Bay Avenue, Ocean City
Call: 609-204-3027
Email to: jss@bergerrealty.com

Scan to see Property page.



Berger Realty

Since 1928



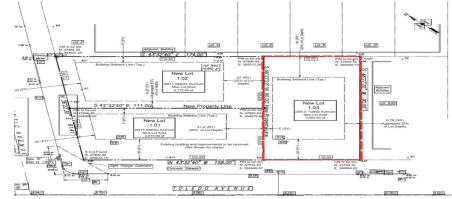
Berger Realty, Inc
1330 Bay Avenue
Ocean City, NJ 08226
609-391-1330/609-391-1300
info@bergerrealty.com



405 Toledo, 1.03, Wildwood Crest, NJ, 08260

Price \$1,690,000.00

PROPERTY DETAILS



Total Rooms	
Bedrooms	0
Baths Full	0
Baths Half	0
Year Built	
Type	Residential Vacant Lot
Block Number	126
Listing #	250474
Taxes	9999999.00

COMMENTS

Premier Beach Block opportunity in the desirable "South End" of Wildwood Crest! Currently the Ala Kai II Motel, this property can accommodate 3 single family homes each sitting on larger sized lots, pending a subdivision approval. Proposed lot size of this lot will be (lot 1.03) 55x90. This beach block property will have tremendous water views, be a short stroll to the b...

PROPERTY FEATURES

CONTACT



Ask for Joan S. Spencer
Berger Realty Inc
1330 Bay Avenue, Ocean City
Call: 609-204-3027
Email to: jss@bergerrealty.com

Scan to see Property page.

