

# Berger Realty

Since 1928



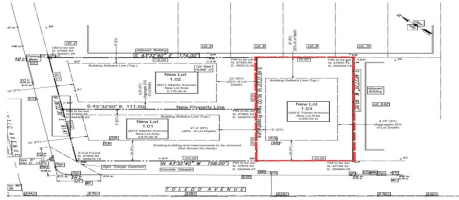
Berger Realty, Inc  
1330 Bay Avenue  
Ocean City, NJ 08226  
609-391-1330/609-391-1300  
info@bergerrealty.com



405 Toledo, 1.03, Wildwood Crest, NJ, 08260

Price \$1,690,000.00

### PROPERTY DETAILS



Total Rooms	
Bedrooms	0
Baths Full	0
Baths Half	0
Year Built	
Type	Residential Vacant Lot
Block Number	126
Listing #	250474
Taxes	9999999.00

### COMMENTS

*Premier Beach Block opportunity in the desirable "South End" of Wildwood Crest! Currently the Ala Kai II Motel, this property can accommodate 3 single family homes each sitting on larger sized lots, pending a subdivision approval. Proposed lot size of this lot will be (lot 1.03) 55x90. This beach block property will have tremendous water views, be a short stroll to the b...*

### PROPERTY FEATURES

### CONTACT



Ask for Carol Cawley  
Berger Realty Inc  
1330 Bay Avenue, Ocean City  
Call: 609-760-3809  
Email to: [clc@bergerrealty.com](mailto:clc@bergerrealty.com)

Scan to see Property page.



# Berger Realty

Since 1928



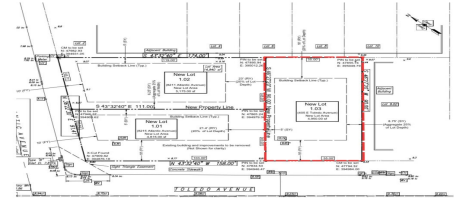
Berger Realty, Inc  
1330 Bay Avenue  
Ocean City, NJ 08226  
609-391-1330/609-391-1300  
info@bergerrealty.com



405 Toledo, 1.03, Wildwood Crest, NJ, 08260

Price \$1,690,000.00

### PROPERTY DETAILS



Total Rooms	
Bedrooms	0
Baths Full	0
Baths Half	0
Year Built	
Type	Residential Vacant Lot
Block Number	126
Listing #	250474
Taxes	9999999.00

### COMMENTS

*Premier Beach Block opportunity in the desirable "South End" of Wildwood Crest! Currently the Ala Kai II Motel, this property can accommodate 3 single family homes each sitting on larger sized lots, pending a subdivision approval. Proposed lot size of this lot will be (lot 1.03) 55x90. This beach block property will have tremendous water views, be a short stroll to the b...*

### PROPERTY FEATURES

### CONTACT



Ask for Carol Cawley  
Berger Realty Inc  
1330 Bay Avenue, Ocean City  
Call: 609-760-3809  
Email to: [clc@bergerrealty.com](mailto:clc@bergerrealty.com)

Scan to see Property page.

