

# Berger Realty

Since 1926



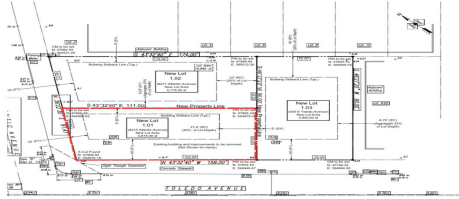
Berger Realty, Inc.  
3160 Asbury Avenue  
Ocean City, NJ 08226  
1-877-237-4371 / 609-399-0076  
info@bergerrealty.com



8215 Atlantic, 1.01, Wildwood Crest, NJ, 08260

Price \$1,490,000.00

### PROPERTY DETAILS



Total Rooms	
Bedrooms	0
Baths Full	0
Baths Half	0
Year Built	
Type	Residential Vacant Lot
Block Number	126
Listing #	250472
Taxes	9999999.00

### COMMENTS

*Unique opportunity on a popular beach block in Wildwood Crest! Currently the Ala Kai II Motel, this property can accommodate 3 single family homes each sitting on larger sized lots, pending a subdivision approval. Proposed lot size of this lot will be (lot 1.01) 45.7x103. This corner property will have water views, be a short stroll to the beach entrance, and room for a p...*

### PROPERTY FEATURES

### CONTACT



Ask for Ken Sedberry  
Berger Realty Inc  
3160 Asbury Avenue, Ocean City  
Call: 609-442-3850  
Email to: kas@bergerrealty.com

Scan to see Property page.



# Berger Realty

Since 1926



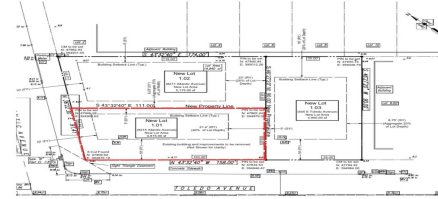
Berger Realty, Inc.  
3160 Asbury Avenue  
Ocean City, NJ 08226  
1-877-237-4371 / 609-399-0076  
info@bergerrealty.com



8215 Atlantic, 1.01, Wildwood Crest, NJ, 08260

Price \$1,490,000.00

### PROPERTY DETAILS



Total Rooms	
Bedrooms	0
Baths Full	0
Baths Half	0
Year Built	
Type	Residential Vacant Lot
Block Number	126
Listing #	250472
Taxes	9999999.00

### COMMENTS

*Unique opportunity on a popular beach block in Wildwood Crest! Currently the Ala Kai II Motel, this property can accommodate 3 single family homes each sitting on larger sized lots, pending a subdivision approval. Proposed lot size of this lot will be (lot 1.01) 45.7x103. This corner property will have water views, be a short stroll to the beach entrance, and room for a p...*

### PROPERTY FEATURES

### CONTACT



Ask for Ken Sedberry  
Berger Realty Inc  
3160 Asbury Avenue, Ocean City  
Call: 609-442-3850  
Email to: kas@bergerrealty.com

Scan to see Property page.

