

Berger Realty

Since 1926



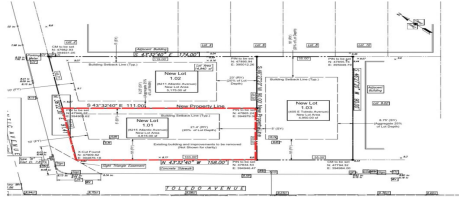
Berger Realty, Inc
1330 Bay Avenue
Ocean City, NJ 08226
609-391-1330/609-391-1300
info@bergerrealty.com



8215 Atlantic, 1.01, Wildwood Crest, NJ, 08260

Price \$1,490,000.00

PROPERTY DETAILS



Total Rooms	0
Bedrooms	0
Baths Full	0
Baths Half	0
Year Built	
Type	Residential Vacant Lot
Block Number	126
Listing #	250472
Taxes	9999999.00

COMMENTS

Unique opportunity on a popular beach block in Wildwood Crest! Currently the Ala Kai II Motel, this property can accommodate 3 single family homes each sitting on larger sized lots, pending a subdivision approval. Proposed lot size of this lot will be (lot 1.01) 45.7x103. This corner property will have water views, be a short stroll to the beach entrance, and room for a p...

PROPERTY FEATURES

CONTACT



Ask for Carol Cawley
Berger Realty Inc
1330 Bay Avenue, Ocean City
Call: 609-760-3809
Email to: clc@bergerrealty.com

Scan to see Property page.



Berger Realty

Since 1926



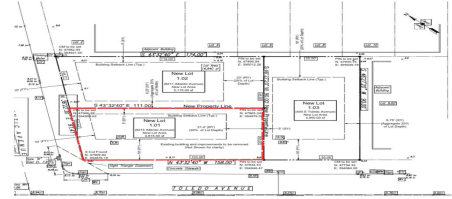
Berger Realty, Inc
1330 Bay Avenue
Ocean City, NJ 08226
609-391-1330/609-391-1300
info@bergerrealty.com



8215 Atlantic, 1.01, Wildwood Crest, NJ, 08260

Price \$1,490,000.00

PROPERTY DETAILS



Total Rooms	0
Bedrooms	0
Baths Full	0
Baths Half	0
Year Built	
Type	Residential Vacant Lot
Block Number	126
Listing #	250472
Taxes	9999999.00

COMMENTS

Unique opportunity on a popular beach block in Wildwood Crest! Currently the Ala Kai II Motel, this property can accommodate 3 single family homes each sitting on larger sized lots, pending a subdivision approval. Proposed lot size of this lot will be (lot 1.01) 45.7x103. This corner property will have water views, be a short stroll to the beach entrance, and room for a p...

PROPERTY FEATURES

CONTACT



Ask for Carol Cawley
Berger Realty Inc
1330 Bay Avenue, Ocean City
Call: 609-760-3809
Email to: clc@bergerrealty.com

Scan to see Property page.

