

Berger Realty

Since 1926



Berger Realty, Inc.
3160 Asbury Avenue
Ocean City, NJ 08226
1-877-237-4371 / 609-399-0076
info@bergerrealty.com



221 87th, Sea Isle City, NJ, 08243

Price \$599,000.00

PROPERTY DETAILS

Total Rooms	5
Bedrooms	2
Baths Full	1
Baths Half	0
Year Built	1982
Type	Condo
Block Number	87 03
Listing #	250274
Taxes	1833.00

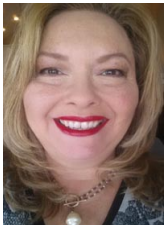
COMMENTS

Plan your escape to Sea Isle City! This cozy, newly renovated, and well-maintained Townsend's Inlet condo features two bedrooms and one bath, blending style and function seamlessly. Leave your car in the off-street dedicated parking space and enjoy a short walk to the beach, bay, restaurants, markets, and food shops. The seasonally guarded 85th Street beach is convenient...

PROPERTY FEATURES

ParkingGarage	OtherRooms	AppliancesIncluded	AlsoIncluded
Parking Pad	Living Room	Range	Drapes
Assigned Parking	Kitchen	Self-Clean Oven	Curtains
Concrete Driveway	Eat In Kitchen	Microwave Oven	Shades
	Laundry/Utility Room	Refrigerator	Furniture
		Washer	
		Dryer	
		Dishwasher	
		Stainless Steel	
		Appliance	
Heating	Cooling	HotWater	Water
Electric	Central Air	Electric	City
Heat Pump			
Sewer			
City			

CONTACT



Ask for Theresa Maina
Berger Realty Inc
3160 Asbury Avenue, Ocean City
Call: 609-703-7725
Email to: tam@bergerrealty.com

Scan to see Property page.



Berger Realty

Since 1926



Berger Realty, Inc.
3160 Asbury Avenue
Ocean City, NJ 08226
1-877-237-4371 / 609-399-0076
info@bergerrealty.com



221 87th, Sea Isle City, NJ, 08243

Price \$599,000.00

PROPERTY DETAILS

Total Rooms	5
Bedrooms	2
Baths Full	1
Baths Half	0
Year Built	1982
Type	Condo
Block Number	87 03
Listing #	250274
Taxes	1833.00

COMMENTS

Plan your escape to Sea Isle City! This cozy, newly renovated, and well-maintained Townsend's Inlet condo features two bedrooms and one bath, blending style and function seamlessly. Leave your car in the off-street dedicated parking space and enjoy a short walk to the beach, bay, restaurants, markets, and food shops. The seasonally guarded 85th Street beach is convenient...

PROPERTY FEATURES

ParkingGarage	OtherRooms	AppliancesIncluded	AlsoIncluded
Parking Pad	Living Room	Range	Drapes
Assigned Parking	Kitchen	Self-Clean Oven	Curtains
Concrete Driveway	Eat In Kitchen	Microwave Oven	Shades
	Laundry/Utility Room	Refrigerator	Furniture
		Washer	
		Dryer	
		Dishwasher	
		Stainless Steel	
		Appliance	
Heating	Cooling	HotWater	Water
Electric	Central Air	Electric	City
Heat Pump			
Sewer			
City			

CONTACT



Ask for Theresa Maina
Berger Realty Inc
3160 Asbury Avenue, Ocean City
Call: 609-703-7725
Email to: tam@bergerrealty.com

Scan to see Property page.

