

Berger Realty

Since 1928



Berger Realty, Inc.
3160 Asbury Avenue
Ocean City, NJ 08226
1-877-237-4371 / 609-399-0076
info@bergerrealty.com



1207 14th, Dorothy, NJ, 08317

Price \$135,000.00

PROPERTY DETAILS

Total Rooms	
Bedrooms	0
Baths Full	0
Baths Half	0
Year Built	
Type	Vacant Lot
Block Number	24
Listing #	250250
Taxes	1202.00

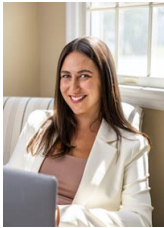


COMMENTS

Escape to the serene beauty of this 5-acre property in the heart of Dorothy! With the driveway & one acre already cleared awaiting your vision, this exceptional lot offers endless possibilities for building your dream home. With its Pinelands approval, this lot has had soil boring conducted so you can rest assured that this property meets the highest environmental standard...

PROPERTY FEATURES

CONTACT



Ask for Lauren Greiner
Berger Realty Inc
3160 Asbury Avenue, Ocean City
Call: 609-602-5960
Email to: lmg@bergerrealty.com

Scan to see Property page.



Berger Realty

Since 1928



Berger Realty, Inc.
3160 Asbury Avenue
Ocean City, NJ 08226
1-877-237-4371 / 609-399-0076
info@bergerrealty.com



1207 14th, Dorothy, NJ, 08317

Price \$135,000.00

PROPERTY DETAILS

Total Rooms	
Bedrooms	0
Baths Full	0
Baths Half	0
Year Built	
Type	Vacant Lot
Block Number	24
Listing #	250250
Taxes	1202.00



COMMENTS

Escape to the serene beauty of this 5-acre property in the heart of Dorothy! With the driveway & one acre already cleared awaiting your vision, this exceptional lot offers endless possibilities for building your dream home. With its Pinelands approval, this lot has had soil boring conducted so you can rest assured that this property meets the highest environmental standard...

PROPERTY FEATURES

CONTACT



Ask for Lauren Greiner
Berger Realty Inc
3160 Asbury Avenue, Ocean City
Call: 609-602-5960
Email to: lmg@bergerrealty.com

Scan to see Property page.

