

# Berger Realty

Since 1928

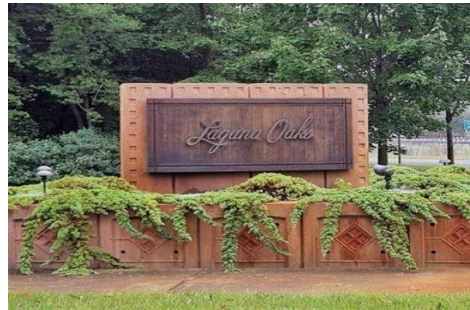


Berger Realty, Inc.  
3160 Asbury Avenue  
Ocean City, NJ 08226  
1-877-237-4371 / 609-399-0076  
info@bergerrealty.com



5 Langford, Laguna Oaks, Cape May Court House, NJ, 08210

Price \$329,000.00



### PROPERTY DETAILS

|              |                        |
|--------------|------------------------|
| Total Rooms  |                        |
| Bedrooms     | 0                      |
| Baths Full   | 0                      |
| Baths Half   | 0                      |
| Year Built   |                        |
| Type         | Residential Vacant Lot |
| Block Number | 335.01                 |
| Listing #    | 250157                 |
| Taxes        | 2497.00                |

### COMMENTS

7.44 acre wooded lot in exclusive, deed restricted community perfectly positioned in the middle of many Shore activities. This neighborhood is located just South of the Big Little 9 Golf Course and just a 10 minute drive to the beautiful beaches of Stone Harbor and Avalon. Easy access to the Garden State Parkway South to Historic Cape May or North to Atlantic City, Phila...

### PROPERTY FEATURES

### CONTACT



Ask for Margarita Kobilianets  
Berger Realty Inc  
3160 Asbury Avenue, Ocean City  
Call: 609-674-3417  
Email to: mak@bergerrealty.com

Scan to see Property page.



# Berger Realty

Since 1928



Berger Realty, Inc.  
3160 Asbury Avenue  
Ocean City, NJ 08226  
1-877-237-4371 / 609-399-0076  
info@bergerrealty.com



5 Langford, Laguna Oaks, Cape May Court House, NJ, 08210

Price \$329,000.00



### PROPERTY DETAILS

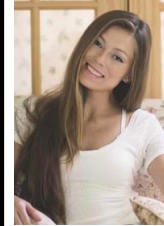
|              |                        |
|--------------|------------------------|
| Total Rooms  |                        |
| Bedrooms     | 0                      |
| Baths Full   | 0                      |
| Baths Half   | 0                      |
| Year Built   |                        |
| Type         | Residential Vacant Lot |
| Block Number | 335.01                 |
| Listing #    | 250157                 |
| Taxes        | 2497.00                |

### COMMENTS

7.44 acre wooded lot in exclusive, deed restricted community perfectly positioned in the middle of many Shore activities. This neighborhood is located just South of the Big Little 9 Golf Course and just a 10 minute drive to the beautiful beaches of Stone Harbor and Avalon. Easy access to the Garden State Parkway South to Historic Cape May or North to Atlantic City, Phila...

### PROPERTY FEATURES

### CONTACT



Ask for Margarita Kobilianets  
Berger Realty Inc  
3160 Asbury Avenue, Ocean City  
Call: 609-674-3417  
Email to: mak@bergerrealty.com

Scan to see Property page.

