

Berger Realty

Since 1926



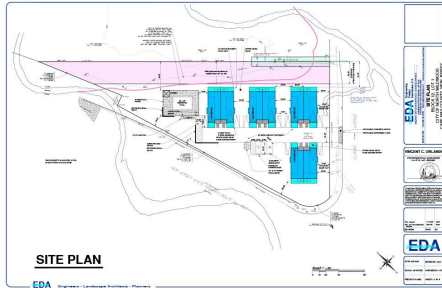
Berger Realty, Inc.
3160 Asbury Avenue
Ocean City, NJ 08226
1-877-237-4371 / 609-399-0076
info@bergerrealty.com



800 Spruce, North Wildwood, NJ, 08260

Price \$2,500,000.00

PROPERTY DETAILS



| | |
|--------------|------------|
| Total Rooms | |
| Bedrooms | 0 |
| Baths Full | 0 |
| Baths Half | 0 |
| Year Built | |
| Type | Vacant Lot |
| Block Number | 12 |
| Listing # | 243607 |
| Taxes | 12230.00 |

COMMENTS

Fully approved for 8 - 2400 +- sq. ft townhomes. Development is approved for large pool facility and plenty of parking. Water views from all angles and perfectly located in Anglesea with easy access to and from our island. See concept plan attached. Contact listing broker for all details...

PROPERTY FEATURES

CONTACT

Berger Realty Inc
3160 Asbury Ave.
Ocean City, NJ 08226
Call: (609) 399-0076
Email to: info@bergerrealty.com
Web: www.bergerrealty.com

Scan to see Property page.



Berger Realty

Since 1926



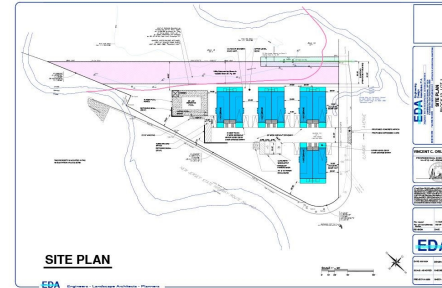
Berger Realty, Inc.
3160 Asbury Avenue
Ocean City, NJ 08226
1-877-237-4371 / 609-399-0076
info@bergerrealty.com



800 Spruce, North Wildwood, NJ, 08260

Price \$2,500,000.00

PROPERTY DETAILS



| | |
|--------------|------------|
| Total Rooms | |
| Bedrooms | 0 |
| Baths Full | 0 |
| Baths Half | 0 |
| Year Built | |
| Type | Vacant Lot |
| Block Number | 12 |
| Listing # | 243607 |
| Taxes | 12230.00 |

COMMENTS

Fully approved for 8 - 2400 +- sq. ft townhomes. Development is approved for large pool facility and plenty of parking. Water views from all angles and perfectly located in Anglesea with easy access to and from our island. See concept plan attached. Contact listing broker for all details...

PROPERTY FEATURES

CONTACT

Berger Realty Inc
3160 Asbury Ave.
Ocean City, NJ 08226
Call: (609) 399-0076
Email to: info@bergerrealty.com
Web: www.bergerrealty.com

Scan to see Property page.

