

Berger Realty

Since 1928



Berger Realty, Inc.
3160 Asbury Avenue
Ocean City, NJ 08226
1-877-237-4371 / 609-399-0076
info@bergerrealty.com



1877 Route 9 North, Clermont, NJ, 08210

Price \$200,000.00

PROPERTY DETAILS

Total Rooms	
Bedrooms	0
Baths Full	0
Baths Half	0
Year Built	
Type	Commercial Vacant Lot
Block Number	261
Listing #	243569
Taxes	2772.00

COMMENTS

Vacant land, Not Heavily Wooded 1 acre lot on Route 9 for sale. Just south of Route 83 and Route 9. Located among other commercial properties in Dennis Township, complementing one another in this sweet spot of Clermont....

PROPERTY FEATURES

CONTACT



Ask for Margarita Kobilianets
Berger Realty Inc
3160 Asbury Avenue, Ocean City
Call: 609-674-3417
Email to: mak@bergerrealty.com

Scan to see Property page.



Berger Realty

Since 1928



Berger Realty, Inc.
3160 Asbury Avenue
Ocean City, NJ 08226
1-877-237-4371 / 609-399-0076
info@bergerrealty.com



1877 Route 9 North, Clermont, NJ, 08210

Price \$200,000.00

PROPERTY DETAILS

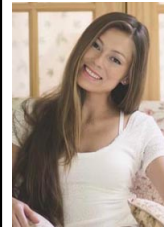
Total Rooms	
Bedrooms	0
Baths Full	0
Baths Half	0
Year Built	
Type	Commercial Vacant Lot
Block Number	261
Listing #	243569
Taxes	2772.00

COMMENTS

Vacant land, Not Heavily Wooded 1 acre lot on Route 9 for sale. Just south of Route 83 and Route 9. Located among other commercial properties in Dennis Township, complementing one another in this sweet spot of Clermont....

PROPERTY FEATURES

CONTACT



Ask for Margarita Kobilianets
Berger Realty Inc
3160 Asbury Avenue, Ocean City
Call: 609-674-3417
Email to: mak@bergerrealty.com

Scan to see Property page.

