

# Berger Realty

Since 1926



Berger Realty, Inc.  
3160 Asbury Avenue  
Ocean City, NJ 08226  
1-877-237-4371 / 609-399-0076  
info@bergerrealty.com



50 School House, Tuckahoe, NJ, 08230

Price \$649,990.00



### PROPERTY DETAILS

Total Rooms	12
Bedrooms	4
Baths Full	3
Baths Half	0
Year Built	2025
Type	Single Family
Block Number	348
Listing #	243448
Taxes	

### COMMENTS

*New Construction Underway - Move-in Early 2025! Ask to see a completed home nearby - Please call for appointment to tour! Nestled in the in the highly sought after Upper Township School District and just a brief drive from the stunning beaches of Ocean City and Sea Isle City! The Hadley is a stunning new construction home plan featuring 2,628 square feet of living space, ...*

### PROPERTY FEATURES

ParkingGarage	OtherRooms	InteriorFeatures	AppliancesIncluded
Garage	Living Room	Fireplace- Gas	Range
2 Car	Dining Room	Walk in Closet	Microwave Oven
Attached	Kitchen	Whirlpool	Dishwasher
	Eat-In-Kitchen	Laminate Flooring	Stove Natural Gas
	Dining Area	Kitchen Island	
	Pantry		
	Laundry/Utility Room		
	Loft		
Basement	Heating	Cooling	HotWater
Full	Gas Natural	Central Air Condition	Gas- Natural
Water	Sewer		
Well	Septic		

### CONTACT



Ask for Lauren Greiner  
Berger Realty Inc  
3160 Asbury Avenue, Ocean City  
Call: 609-602-5960  
Email to: lmg@bergerrealty.com

Scan to see Property page.



# Berger Realty

Since 1926



Berger Realty, Inc.  
3160 Asbury Avenue  
Ocean City, NJ 08226  
1-877-237-4371 / 609-399-0076  
info@bergerrealty.com



50 School House, Tuckahoe, NJ, 08230

Price \$649,990.00



### PROPERTY DETAILS

Total Rooms	12
Bedrooms	4
Baths Full	3
Baths Half	0
Year Built	2025
Type	Single Family
Block Number	348
Listing #	243448
Taxes	

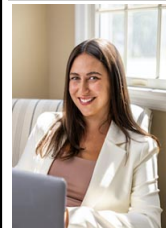
### COMMENTS

*New Construction Underway - Move-in Early 2025! Ask to see a completed home nearby - Please call for appointment to tour! Nestled in the in the highly sought after Upper Township School District and just a brief drive from the stunning beaches of Ocean City and Sea Isle City! The Hadley is a stunning new construction home plan featuring 2,628 square feet of living space, ...*

### PROPERTY FEATURES

ParkingGarage	OtherRooms	InteriorFeatures	AppliancesIncluded
Garage	Living Room	Fireplace- Gas	Range
2 Car	Dining Room	Walk in Closet	Microwave Oven
Attached	Kitchen	Whirlpool	Dishwasher
	Eat-In-Kitchen	Laminate Flooring	Stove Natural Gas
	Dining Area	Kitchen Island	
	Pantry		
	Laundry/Utility Room		
	Loft		
Basement	Heating	Cooling	HotWater
Full	Gas Natural	Central Air Condition	Gas- Natural
Water	Sewer		
Well	Septic		

### CONTACT



Ask for Lauren Greiner  
Berger Realty Inc  
3160 Asbury Avenue, Ocean City  
Call: 609-602-5960  
Email to: lmg@bergerrealty.com

Scan to see Property page.

