



Berger Realty, Inc.
3160 Asbury Avenue
Ocean City, NJ 08226
1-877-237-4371 / 609-399-0076
info@bergerrealty.com



432 Avalon, Avalon Manor, NJ, 08202

Price \$1,399,000.00



PROPERTY DETAILS

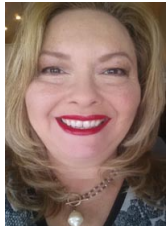
| | |
|--------------|------------------------|
| Total Rooms | |
| Bedrooms | 0 |
| Baths Full | 0 |
| Baths Half | 0 |
| Year Built | |
| Type | Residential Vacant Lot |
| Block Number | 17 |
| Listing # | 243447 |
| Taxes | 6889.00 |

COMMENTS

Prime Bayfront Lot with Unobstructed Views in Avalon Manor. A rare opportunity to build your dream home on one of the most coveted bayfront lots in Avalon Manor. This expansive property with 60' of frontage offers unobstructed, panoramic views of the bay and wetlands, providing a stunning backdrop for your future custom-designed residence. With over 23,000 sq. ft. of lan...

PROPERTY FEATURES

CONTACT



Ask for Theresa Maina
Berger Realty Inc
3160 Asbury Avenue, Ocean City
Call: 609-703-7725
Email to: tam@bergerrealty.com

Scan to see Property page.



Berger Realty, Inc.
3160 Asbury Avenue
Ocean City, NJ 08226
1-877-237-4371 / 609-399-0076
info@bergerrealty.com



432 Avalon, Avalon Manor, NJ, 08202

Price \$1,399,000.00



PROPERTY DETAILS

| | |
|--------------|------------------------|
| Total Rooms | |
| Bedrooms | 0 |
| Baths Full | 0 |
| Baths Half | 0 |
| Year Built | |
| Type | Residential Vacant Lot |
| Block Number | 17 |
| Listing # | 243447 |
| Taxes | 6889.00 |

COMMENTS

Prime Bayfront Lot with Unobstructed Views in Avalon Manor. A rare opportunity to build your dream home on one of the most coveted bayfront lots in Avalon Manor. This expansive property with 60' of frontage offers unobstructed, panoramic views of the bay and wetlands, providing a stunning backdrop for your future custom-designed residence. With over 23,000 sq. ft. of lan...

PROPERTY FEATURES

CONTACT



Ask for Theresa Maina
Berger Realty Inc
3160 Asbury Avenue, Ocean City
Call: 609-703-7725
Email to: tam@bergerrealty.com

Scan to see Property page.

