



Berger Realty, Inc.
3160 Asbury Avenue
Ocean City, NJ 08226
1-877-237-4371 / 609-399-0076
info@bergerrealty.com



228 Betsey Scull, Egg Harbor Township, NJ, 08234

Price \$299,000.00

PROPERTY DETAILS

Total Rooms	0
Bedrooms	0
Baths Full	0
Baths Half	0
Year Built	
Type	Residential Vacant Lot
Block Number	7801
Listing #	243395
Taxes	12118.00

COMMENTS

Must see 9.1 acres of BEAUTIFUL SECLUDED LAND TOWARD THE END OF Betsey Scull Road. SEE ATTACHED VIRTUAL TOUR OF PROPERTY THIS SUMMER! It is the perfect location to build your dream home for your family! So close to the beautiful beaches of Ocean City and the great restaurants, and shops in Somers Point, yet secluded enough in your own wooded oasis with 9.1 acres with hardl...

PROPERTY FEATURES

CONTACT



Ask for Margarita Kobilianets
Berger Realty Inc
3160 Asbury Avenue, Ocean City
Call: 609-674-3417
Email to: mak@bergerrealty.com

Scan to see Property page.



Berger Realty, Inc.
3160 Asbury Avenue
Ocean City, NJ 08226
1-877-237-4371 / 609-399-0076
info@bergerrealty.com



228 Betsey Scull, Egg Harbor Township, NJ, 08234

Price \$299,000.00

PROPERTY DETAILS

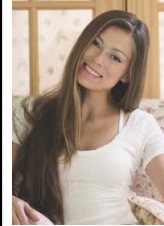
Total Rooms	0
Bedrooms	0
Baths Full	0
Baths Half	0
Year Built	
Type	Residential Vacant Lot
Block Number	7801
Listing #	243395
Taxes	12118.00

COMMENTS

Must see 9.1 acres of BEAUTIFUL SECLUDED LAND TOWARD THE END OF Betsey Scull Road. SEE ATTACHED VIRTUAL TOUR OF PROPERTY THIS SUMMER! It is the perfect location to build your dream home for your family! So close to the beautiful beaches of Ocean City and the great restaurants, and shops in Somers Point, yet secluded enough in your own wooded oasis with 9.1 acres with hardl...

PROPERTY FEATURES

CONTACT



Ask for Margarita Kobilianets
Berger Realty Inc
3160 Asbury Avenue, Ocean City
Call: 609-674-3417
Email to: mak@bergerrealty.com

Scan to see Property page.

