

Berger Realty

Since 1928



Berger Realty, Inc.
3160 Asbury Avenue
Ocean City, NJ 08226
1-877-237-4371 / 609-399-0076
info@bergerrealty.com



9300 Bayview, LOWER TOWNSHIP/DIAMOND BEACH,
Wildwood Crest, NJ, 08260

Price \$749,000.00

PROPERTY DETAILS

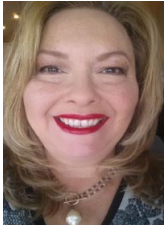
Total Rooms	
Bedrooms	0
Baths Full	0
Baths Half	0
Year Built	
Type	Vacant Lot
Block Number	820
Listing #	243348
Taxes	5894.00

COMMENTS

Overlooking the Marsh/Meadows & Intercoastal Waterway, this 215x200 Vacant Lot has the Potential to Become the Base of Your New Paradise.....Endless Views & a Serene Setting will Eventually Grace the Home of Your Dreams. CAFRA Approved for Development of a Single-Family Home (R-4 Zoning). Water/Sewer Connection on-site - the Time is NOW!...

PROPERTY FEATURES

CONTACT



Ask for Theresa Maina
Berger Realty Inc
3160 Asbury Avenue, Ocean City
Call: 609-703-7725
Email to: tam@bergerrealty.com

Scan to see Property page.



Berger Realty

Since 1928



Berger Realty, Inc.
3160 Asbury Avenue
Ocean City, NJ 08226
1-877-237-4371 / 609-399-0076
info@bergerrealty.com



9300 Bayview, LOWER TOWNSHIP/DIAMOND BEACH,
Wildwood Crest, NJ, 08260

Price \$749,000.00

PROPERTY DETAILS

Total Rooms	
Bedrooms	0
Baths Full	0
Baths Half	0
Year Built	
Type	Vacant Lot
Block Number	820
Listing #	243348
Taxes	5894.00

COMMENTS

Overlooking the Marsh/Meadows & Intercoastal Waterway, this 215x200 Vacant Lot has the Potential to Become the Base of Your New Paradise.....Endless Views & a Serene Setting will Eventually Grace the Home of Your Dreams. CAFRA Approved for Development of a Single-Family Home (R-4 Zoning). Water/Sewer Connection on-site - the Time is NOW!...

PROPERTY FEATURES

CONTACT



Ask for Theresa Maina
Berger Realty Inc
3160 Asbury Avenue, Ocean City
Call: 609-703-7725
Email to: tam@bergerrealty.com

Scan to see Property page.

