



105 Thompson, Egg Harbor Township, NJ, 08234

Price \$1,299,900.00



PROPERTY DETAILS

Total Rooms	13
Bedrooms	3
Baths Full	3
Baths Half	1
Year Built	1960
Type	Single Family
Block Number	8301
Listing #	243333
Taxes	10766.00

COMMENTS

WOW! Don't miss this rare opportunity located on a picturesque 14+/- acres. Lovingly RESTORED Sunday Drive Farm, a working Lavender Bee & Flower Farm! This 2,300 sq. ft farmhouse has a New septic, New gas heat & central air, New bathroom, New water treatment system, New water heater, 3 large bedrooms, 2.5 baths, spacious living room with wood burning fireplace, beautiful ...

PROPERTY FEATURES

OutsideFeatures	ParkingGarage	OtherRooms	InteriorFeatures
Patio	Detached	Dining Room	Greenhouse
See Remarks	See Remarks	Eat-In-Kitchen	Handicap Features
	Gravel Driveway	Pantry	Wood Flooring
		Workshop	Loft
		Loft	Smoke/Fire Alarm
		See Remarks	Storage
			Walk in Closet
			Fireplace- Wood
			Kitchen Island
AppliancesIncluded	AlsoIncluded	Basement	Heating
Self-Clean Oven	Partial Furniture	Partial	Gas Natural
Microwave Oven			
Refrigerator			
Washer			
Dryer			
Dishwasher			
Disposal			
Stove Electric			
Cooling	HotWater	Water	Sewer
Central Air Condition	Electric	Private	Private
		Well	

CONTACT

Ask for Theresa Maina
Berger Realty Inc
3160 Asbury Avenue, Ocean City

Scan to see Property page.



105 Thompson, Egg Harbor Township, NJ, 08234

Price \$1,299,900.00



PROPERTY DETAILS

Total Rooms	13
Bedrooms	3
Baths Full	3
Baths Half	1
Year Built	1960
Type	Single Family
Block Number	8301
Listing #	243333
Taxes	10766.00

COMMENTS

WOW! Don't miss this rare opportunity located on a picturesque 14+/- acres. Lovingly RESTORED Sunday Drive Farm, a working Lavender Bee & Flower Farm! This 2,300 sq. ft farmhouse has a New septic, New gas heat & central air, New bathroom, New water treatment system, New water heater, 3 large bedrooms, 2.5 baths, spacious living room with wood burning fireplace, beautiful ...

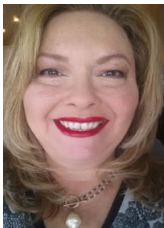
PROPERTY FEATURES

OutsideFeatures	ParkingGarage	OtherRooms	InteriorFeatures
Patio	Detached	Dining Room	Greenhouse
See Remarks	See Remarks	Eat-In-Kitchen	Handicap Features
	Gravel Driveway	Pantry	Wood Flooring
		Workshop	Loft
		Loft	Smoke/Fire Alarm
		See Remarks	Storage
			Walk in Closet
			Fireplace- Wood
			Kitchen Island
AppliancesIncluded	AlsoIncluded	Basement	Heating
Self-Clean Oven	Partial Furniture	Partial	Gas Natural
Microwave Oven			
Refrigerator			
Washer			
Dryer			
Dishwasher			
Disposal			
Stove Electric			
Cooling	HotWater	Water	Sewer
Central Air Condition	Electric	Private	Private
		Well	

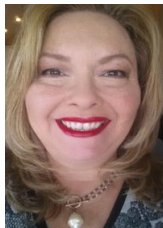
CONTACT

Ask for Theresa Maina
Berger Realty Inc
3160 Asbury Avenue, Ocean City

Scan to see Property page.



Call: 609-703-7725
Email to: tam@bergerrealty.com



Call: 609-703-7725
Email to: tam@bergerrealty.com

