

Berger Realty

Since 1928



Berger Realty, Inc.
3160 Asbury Avenue
Ocean City, NJ 08226
1-877-237-4371 / 609-399-0076
info@bergerrealty.com



2108 Dune, Avalon, NJ, 08202

Price \$7,499,000.00

PROPERTY DETAILS

Total Rooms	
Bedrooms	0
Baths Full	
Baths Half	
Year Built	
Type	Restaurant
Block Number	21.04
Listing #	243294
Taxes	19628.00

COMMENTS

Welcome to the heart of Avalon, known as the Circle Pizza Plaza, a prime investment opportunity in the best seashore community New Jersey has to offer. This unique property sits on just over half an acre of land and features five commercial and four residential spaces, all fully rented and generating steady income. It is currently home to five restaurants including some of...

PROPERTY FEATURES

Heating	Cooling	Water	Sewer
Gas Natural	Central Air Conditioning	City	City
Electric			
Forced Air			

CONTACT



Ask for Joyce McMahon
Berger Realty Inc
3160 Asbury Avenue, Ocean City
Call:
Email to: jmm@bergerrealty.com

Scan to see Property page.



Berger Realty

Since 1928



Berger Realty, Inc.
3160 Asbury Avenue
Ocean City, NJ 08226
1-877-237-4371 / 609-399-0076
info@bergerrealty.com



2108 Dune, Avalon, NJ, 08202

Price \$7,499,000.00

PROPERTY DETAILS

Total Rooms	
Bedrooms	0
Baths Full	
Baths Half	
Year Built	
Type	Restaurant
Block Number	21.04
Listing #	243294
Taxes	19628.00

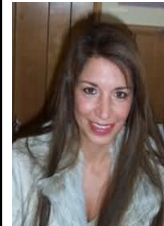
COMMENTS

Welcome to the heart of Avalon, known as the Circle Pizza Plaza, a prime investment opportunity in the best seashore community New Jersey has to offer. This unique property sits on just over half an acre of land and features five commercial and four residential spaces, all fully rented and generating steady income. It is currently home to five restaurants including some of...

PROPERTY FEATURES

Heating	Cooling	Water	Sewer
Gas Natural	Central Air Conditioning	City	City
Electric			
Forced Air			

CONTACT



Ask for Joyce McMahon
Berger Realty Inc
3160 Asbury Avenue, Ocean City
Call:
Email to: jmm@bergerrealty.com

Scan to see Property page.

