



Berger Realty, Inc.
3160 Asbury Avenue
Ocean City, NJ 08226
1-877-237-4371 / 609-399-0076
info@bergerrealty.com



8515 Landis, Unit 305, Sea Isle City, NJ, 08243

Price \$979,900.00



PROPERTY DETAILS

Total Rooms	8
Bedrooms	3
Baths Full	3
Baths Half	0
Year Built	2018
Type	Condo
Block Number	3
Listing #	243199
Taxes	8000.00

COMMENTS

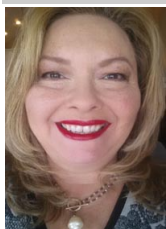
Welcome to The Cape in Townsend Inlet! Top floor corner Unit #305. The open floorplan features 1330 square feet with 3 bedrooms and 3 baths flooded with natural light. The inviting layout seamlessly connects the living space to the deck, creating an ideal setting for enjoying the coastal breeze while listening to the soothing sound of the ocean. The kitchen features white ...

PROPERTY FEATURES

Heating	Cooling	HotWater	Water
Gas Natural	Central Air	Gas	Public

Sewer
Public

CONTACT



Ask for Theresa Maina
Berger Realty Inc
3160 Asbury Avenue, Ocean City
Call: 609-703-7725
Email to: tam@bergerrealty.com

Scan to see Property page.



Berger Realty, Inc.
3160 Asbury Avenue
Ocean City, NJ 08226
1-877-237-4371 / 609-399-0076
info@bergerrealty.com



8515 Landis, Unit 305, Sea Isle City, NJ, 08243

Price \$979,900.00



PROPERTY DETAILS

Total Rooms	8
Bedrooms	3
Baths Full	3
Baths Half	0
Year Built	2018
Type	Condo
Block Number	3
Listing #	243199
Taxes	8000.00

COMMENTS

Welcome to The Cape in Townsend Inlet! Top floor corner Unit #305. The open floorplan features 1330 square feet with 3 bedrooms and 3 baths flooded with natural light. The inviting layout seamlessly connects the living space to the deck, creating an ideal setting for enjoying the coastal breeze while listening to the soothing sound of the ocean. The kitchen features white ...

PROPERTY FEATURES

Heating	Cooling	HotWater	Water
Gas Natural	Central Air	Gas	Public

Sewer
Public

CONTACT



Ask for Theresa Maina
Berger Realty Inc
3160 Asbury Avenue, Ocean City
Call: 609-703-7725
Email to: tam@bergerrealty.com

Scan to see Property page.

