

# Berger Realty

Since 1926



Berger Realty, Inc  
1330 Bay Avenue  
Ocean City, NJ 08226  
609-391-1330/609-391-1300  
info@bergerrealty.com

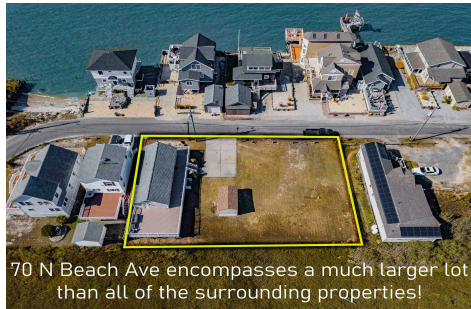


70 Beach, Cape May Court House, NJ, 08210

Price \$374,900.00

### PROPERTY DETAILS

Total Rooms	5
Bedrooms	2
Baths Full	1
Baths Half	0
Year Built	1940
Type	Single Family
Block Number	28
Listing #	243095
Taxes	3219.00



70 N Beach Ave encompasses a much larger lot than all of the surrounding properties!

### COMMENTS

*The one you've been waiting for! Welcome to 70 N Beach Ave - a fully remodeled raised 2-bed rancher on a LARGE 125'X75' lot in the rarely offered Reed's Beach community in Cape May Court House! Breathtaking views of nature, wildlife, and sunrises/sunsets are a daily occurrence in Reed's Beach. Take note of the impressive lot size in comparison to the surrounding ...*

### PROPERTY FEATURES

Exterior Vinyl	OutsideFeatures Deck	ParkingGarage Concrete Driveway 4 car parking	OtherRooms Living Room Kitchen Laundry Closet
InteriorFeatures Cathedral Ceilings	AppliancesIncluded Range Refrigerator Washer Dryer	Heating Electric Forced Air	Cooling Central Air Condition Electric
HotWater Electric	Water Well	Sewer Septic	

### CONTACT



Ask for Cassidy Fletcher  
Berger Realty Inc  
1330 Bay Avenue, Ocean City  
Call: 609-425-6121  
Email to: crf@bergerrealty.com

Scan to see Property page.



# Berger Realty

Since 1926



Berger Realty, Inc  
1330 Bay Avenue  
Ocean City, NJ 08226  
609-391-1330/609-391-1300  
info@bergerrealty.com



70 Beach, Cape May Court House, NJ, 08210

Price \$374,900.00

### PROPERTY DETAILS

Total Rooms	5
Bedrooms	2
Baths Full	1
Baths Half	0
Year Built	1940
Type	Single Family
Block Number	28
Listing #	243095
Taxes	3219.00



70 N Beach Ave encompasses a much larger lot than all of the surrounding properties!

### COMMENTS

*The one you've been waiting for! Welcome to 70 N Beach Ave - a fully remodeled raised 2-bed rancher on a LARGE 125'X75' lot in the rarely offered Reed's Beach community in Cape May Court House! Breathtaking views of nature, wildlife, and sunrises/sunsets are a daily occurrence in Reed's Beach. Take note of the impressive lot size in comparison to the surrounding ...*

### PROPERTY FEATURES

Exterior Vinyl	OutsideFeatures Deck	ParkingGarage Concrete Driveway 4 car parking	OtherRooms Living Room Kitchen Laundry Closet
InteriorFeatures Cathedral Ceilings	AppliancesIncluded Range Refrigerator Washer Dryer	Heating Electric Forced Air	Cooling Central Air Condition Electric
HotWater Electric	Water Well	Sewer Septic	

### CONTACT



Ask for Cassidy Fletcher  
Berger Realty Inc  
1330 Bay Avenue, Ocean City  
Call: 609-425-6121  
Email to: crf@bergerrealty.com

Scan to see Property page.

