

# Berger Realty

Since 1926



Berger Realty, Inc.  
3160 Asbury Avenue  
Ocean City, NJ 08226  
1-877-237-4371 / 609-399-0076  
info@bergerrealty.com



# Berger Realty

Since 1926



Berger Realty, Inc.  
3160 Asbury Avenue  
Ocean City, NJ 08226  
1-877-237-4371 / 609-399-0076  
info@bergerrealty.com



11 Romney, Cape May Court House, NJ, 08210

Price \$589,900.00



### PROPERTY DETAILS

Total Rooms	7
Bedrooms	4
Baths Full	3
Baths Half	0
Year Built	1985
Type	Single Family
Block Number	226.01
Listing #	243032
Taxes	6988.00

### COMMENTS

Welcome to Romney Place, a conveniently nestled neighborhood close to the downtown district of Cape May Court House and all the boutique dining and amenities it offers. Step inside to find a sprawling floorplan with an open concept living space featuring vaulted ceilings, large kitchen with center island, and dining area. This open area flows nicely to the rear deck with f...

### PROPERTY FEATURES

Exterior	OutsideFeatures	ParkingGarage	OtherRooms
Vinyl	Deck	Parking Pad	Living Room
Solar Panels-Leased	Porch	Concrete Driveway	Kitchen
	Fenced Yard	4 car parking	Eat-In-Kitchen
	Storage Building		Dining Area
	Cable TV		Laundry/Utility Room
	Sidewalks		Great Room
	Outside Shower		Storage Attic
			See Remarks
			1st Floor Primary Bedroom
InteriorFeatures	AppliancesIncluded	AlsoIncluded	Basement
Bar	Range	Shades	Crawl Space
Cathedral Ceilings	Self-Clean Oven	Furniture	Outside Entrance
Fireplace- Gas	Microwave Oven	Partial Furniture	
Wood Flooring	Refrigerator		
Smoke/Fire Alarm	Washer		
Walk in Closet	Dryer		
Wall to Wall Carpet	Dishwasher		
Tile Flooring	Disposal		
Kitchen Island	Smoke/Fire Detector		
	Stove Natural Gas		
Heating	Cooling	HotWater	Water
Gas Natural	Central Air Condition	On Demand	City
Forced Air	Ceiling Fan		
Space/Wall/Floor	Other Air Conditioning		

Sewer  
City

11 Romney, Cape May Court House, NJ, 08210

Price \$589,900.00



### PROPERTY DETAILS

Total Rooms	7
Bedrooms	4
Baths Full	3
Baths Half	0
Year Built	1985
Type	Single Family
Block Number	226.01
Listing #	243032
Taxes	6988.00

### COMMENTS

Welcome to Romney Place, a conveniently nestled neighborhood close to the downtown district of Cape May Court House and all the boutique dining and amenities it offers. Step inside to find a sprawling floorplan with an open concept living space featuring vaulted ceilings, large kitchen with center island, and dining area. This open area flows nicely to the rear deck with f...

### PROPERTY FEATURES

Exterior	OutsideFeatures	ParkingGarage	OtherRooms
Vinyl	Deck	Parking Pad	Living Room
Solar Panels-Leased	Porch	Concrete Driveway	Kitchen
	Fenced Yard	4 car parking	Eat-In-Kitchen
	Storage Building		Dining Area
	Cable TV		Laundry/Utility Room
	Sidewalks		Great Room
	Outside Shower		Storage Attic
			See Remarks
			1st Floor Primary Bedroom
InteriorFeatures	AppliancesIncluded	AlsoIncluded	Basement
Bar	Range	Shades	Crawl Space
Cathedral Ceilings	Self-Clean Oven	Furniture	Outside Entrance
Fireplace- Gas	Microwave Oven	Partial Furniture	
Wood Flooring	Refrigerator		
Smoke/Fire Alarm	Washer		
Walk in Closet	Dryer		
Wall to Wall Carpet	Dishwasher		
Tile Flooring	Disposal		
Kitchen Island	Smoke/Fire Detector		
	Stove Natural Gas		
Heating	Cooling	HotWater	Water
Gas Natural	Central Air Condition	On Demand	City
Forced Air	Ceiling Fan		
Space/Wall/Floor	Other Air Conditioning		

Sewer  
City

**CONTACT**

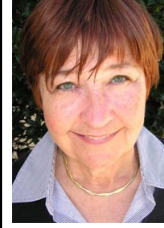


**Ask for Dori Adams**  
**Berger Realty Inc**  
**3160 Asbury Avenue, Ocean City**  
**Call: 609-602-2545**  
**Email to: [doa@bergerrealty.com](mailto:doa@bergerrealty.com)**

Scan to see Property page.



**CONTACT**



**Ask for Dori Adams**  
**Berger Realty Inc**  
**3160 Asbury Avenue, Ocean City**  
**Call: 609-602-2545**  
**Email to: [doa@bergerrealty.com](mailto:doa@bergerrealty.com)**

Scan to see Property page.

