

Berger Realty

Since 1926



Berger Realty, Inc.
3160 Asbury Avenue
Ocean City, NJ 08226
1-877-237-4371 / 609-399-0076
info@bergerrealty.com



2435 Wesley, Ocean City, NJ, 08226

Price \$4,150,000.00

PROPERTY DETAILS

Total Rooms	8
Bedrooms	4
Baths Full	3
Baths Half	1
Year Built	1985
Type	Condo
Block Number	2400
Listing #	242976
Taxes	18745.00

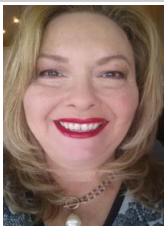
COMMENTS

One of the very best beachfront gems of the Gold Coast in Ocean City. This location is unsurpassed when it comes to beachfront properties! Situated in this sought after location, 2435 Wesley is an iconic property in an iconic location. Sitting out further than almost any other property along the beach gives this 2nd floor beauty some of the best beach and ocean views on th...

PROPERTY FEATURES

UnitFeatures	ParkingGarage	OtherRooms	AppliancesIncluded
Handicap Features	Auto Door Opener	Living Room	Range
Fireplace	Garage	Kitchen	Oven
Kitchen Island	3 Car	Dining Area	Self-Clean Oven
Walk-In/Cedar Closet	Attached	Laundry/Utility Room	Refrigerator
Wall To Wall Carpet		Great Room	Washer
Foyer		Storage Space	Dryer
Tile Floors			Dishwasher
			Disposal
			Smoke/Fire Detector
			Wine Cooler
AlsoIncluded	Heating	Cooling	HotWater
Curtains	Gas Natural	Central Air	Gas
Shades	Forced Air	Electric	
Blinds	Multi-Zoned	Multi Zoned	
Partial Furniture			
Water	Sewer		
Public	Public		

CONTACT



Ask for Theresa Maina
Berger Realty Inc
3160 Asbury Avenue, Ocean City
Call: 609-703-7725
Email to: tam@bergerrealty.com

Scan to property page.

Berger Realty

Since 1926



Berger Realty, Inc.
3160 Asbury Avenue
Ocean City, NJ 08226
1-877-237-4371 / 609-399-0076
info@bergerrealty.com



2435 Wesley, Ocean City, NJ, 08226

Price \$4,150,000.00

PROPERTY DETAILS

Total Rooms	8
Bedrooms	4
Baths Full	3
Baths Half	1
Year Built	1985
Type	Condo
Block Number	2400
Listing #	242976
Taxes	18745.00

COMMENTS

One of the very best beachfront gems of the Gold Coast in Ocean City. This location is unsurpassed when it comes to beachfront properties! Situated in this sought after location, 2435 Wesley is an iconic property in an iconic location. Sitting out further than almost any other property along the beach gives this 2nd floor beauty some of the best beach and ocean views on th...

PROPERTY FEATURES

UnitFeatures	ParkingGarage	OtherRooms	AppliancesIncluded
Handicap Features	Auto Door Opener	Living Room	Range
Fireplace	Garage	Kitchen	Oven
Kitchen Island	3 Car	Dining Area	Self-Clean Oven
Walk-In/Cedar Closet	Attached	Laundry/Utility Room	Refrigerator
Wall To Wall Carpet		Great Room	Washer
Foyer		Storage Space	Dryer
Tile Floors			Dishwasher
			Disposal
			Smoke/Fire Detector
			Wine Cooler
AlsoIncluded	Heating	Cooling	HotWater
Curtains	Gas Natural	Central Air	Gas
Shades	Forced Air	Electric	
Blinds	Multi-Zoned	Multi Zoned	
Partial Furniture			
Water	Sewer		
Public	Public		

CONTACT



Ask for Theresa Maina
Berger Realty Inc
3160 Asbury Avenue, Ocean City
Call: 609-703-7725
Email to: tam@bergerrealty.com

Scan to property page.

