

# Berger Realty

Since 1926



Berger Realty, Inc.  
3160 Asbury Avenue  
Ocean City, NJ 08226  
1-877-237-4371 / 609-399-0076  
info@bergerrealty.com



1 Roosevelt, Marmora, NJ, 08223

Price \$284,900.00

### PROPERTY DETAILS

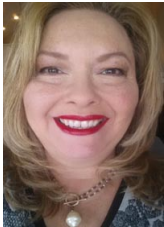
Total Rooms	
Bedrooms	0
Baths Full	0
Baths Half	0
Year Built	
Type	Commercial Vacant Lot
Block Number	730
Listing #	242942
Taxes	266.00

### COMMENTS

Prime location with this 180 X 90 corner lot located only a few miles from Ocean City beaches on one of the county's busiest intersections. Prospective buyer should contact local zoning office for building options....

### PROPERTY FEATURES

### CONTACT



Ask for Theresa Maina  
Berger Realty Inc  
3160 Asbury Avenue, Ocean City  
Call: 609-703-7725  
Email to: tam@bergerrealty.com

Scan to see Property page.



# Berger Realty

Since 1926



Berger Realty, Inc.  
3160 Asbury Avenue  
Ocean City, NJ 08226  
1-877-237-4371 / 609-399-0076  
info@bergerrealty.com



1 Roosevelt, Marmora, NJ, 08223

Price \$284,900.00

### PROPERTY DETAILS

Total Rooms	
Bedrooms	0
Baths Full	0
Baths Half	0
Year Built	
Type	Commercial Vacant Lot
Block Number	730
Listing #	242942
Taxes	266.00

### COMMENTS

Prime location with this 180 X 90 corner lot located only a few miles from Ocean City beaches on one of the county's busiest intersections. Prospective buyer should contact local zoning office for building options....

### PROPERTY FEATURES

### CONTACT



Ask for Theresa Maina  
Berger Realty Inc  
3160 Asbury Avenue, Ocean City  
Call: 609-703-7725  
Email to: tam@bergerrealty.com

Scan to see Property page.

