

Berger Realty

Since 1926



Berger Realty, Inc.
3160 Asbury Avenue
Ocean City, NJ 08226
1-877-237-4371 / 609-399-0076
info@bergerrealty.com



1568 Route 9 N, Cape May Court House, NJ, 08210

Price \$249,000.00

PROPERTY DETAILS

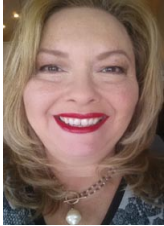
Total Rooms	
Bedrooms	0
Baths Full	0
Baths Half	0
Year Built	
Type	Vacant Lot
Block Number	114
Listing #	242756
Taxes	3040.00

COMMENTS

Large lot just over one acre and minutes to Avalon's Beaches! Located a few hundred feet from Avalon Boulevard this amazing location is ideal for anyone looking to build their dream home. Village Commercial Zoning will allow for a single family home with a small business. Lot dimensions in aerial photos are estimates based on tax map. Don't miss this incredible oppor...

PROPERTY FEATURES

CONTACT



Ask for Theresa Maina
Berger Realty Inc
3160 Asbury Avenue, Ocean City
Call: 609-703-7725
Email to: tam@bergerrealty.com

Scan to see Property page.



Berger Realty

Since 1926



Berger Realty, Inc.
3160 Asbury Avenue
Ocean City, NJ 08226
1-877-237-4371 / 609-399-0076
info@bergerrealty.com



1568 Route 9 N, Cape May Court House, NJ, 08210

Price \$249,000.00

PROPERTY DETAILS

Total Rooms	
Bedrooms	0
Baths Full	0
Baths Half	0
Year Built	
Type	Vacant Lot
Block Number	114
Listing #	242756
Taxes	3040.00

COMMENTS

Large lot just over one acre and minutes to Avalon's Beaches! Located a few hundred feet from Avalon Boulevard this amazing location is ideal for anyone looking to build their dream home. Village Commercial Zoning will allow for a single family home with a small business. Lot dimensions in aerial photos are estimates based on tax map. Don't miss this incredible oppor...

PROPERTY FEATURES

CONTACT



Ask for Theresa Maina
Berger Realty Inc
3160 Asbury Avenue, Ocean City
Call: 609-703-7725
Email to: tam@bergerrealty.com

Scan to see Property page.

