

# Berger Realty

Since 1926



Berger Realty, Inc.  
3160 Asbury Avenue  
Ocean City, NJ 08226  
1-877-237-4371 / 609-399-0076  
info@bergerrealty.com



1568 Route 9 N, Cape May Court House, NJ, 08210

Price \$249,000.00

### PROPERTY DETAILS

Total Rooms	
Bedrooms	0
Baths Full	0
Baths Half	0
Year Built	
Type	Vacant Lot
Block Number	114
Listing #	242756
Taxes	3040.00

### COMMENTS

*Large lot just over one acre and minutes to Avalon's Beaches! Located a few hundred feet from Avalon Boulevard this amazing location is ideal for anyone looking to build their dream home. Village Commercial Zoning will allow for a single family home with a small business. Lot dimensions in aerial photos are estimates based on tax map. Don't miss this incredible oppor...*

### PROPERTY FEATURES

### CONTACT



Ask for Marki Lyn Warlow  
Berger Realty Inc  
3160 Asbury Avenue, Ocean City  
Call:  
Email to: mlw@bergerrealty.com

Scan to see Property page.



# Berger Realty

Since 1926



Berger Realty, Inc.  
3160 Asbury Avenue  
Ocean City, NJ 08226  
1-877-237-4371 / 609-399-0076  
info@bergerrealty.com



1568 Route 9 N, Cape May Court House, NJ, 08210

Price \$249,000.00

### PROPERTY DETAILS

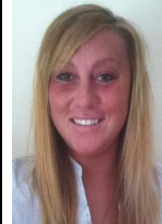
Total Rooms	
Bedrooms	0
Baths Full	0
Baths Half	0
Year Built	
Type	Vacant Lot
Block Number	114
Listing #	242756
Taxes	3040.00

### COMMENTS

*Large lot just over one acre and minutes to Avalon's Beaches! Located a few hundred feet from Avalon Boulevard this amazing location is ideal for anyone looking to build their dream home. Village Commercial Zoning will allow for a single family home with a small business. Lot dimensions in aerial photos are estimates based on tax map. Don't miss this incredible oppor...*

### PROPERTY FEATURES

### CONTACT



Ask for Marki Lyn Warlow  
Berger Realty Inc  
3160 Asbury Avenue, Ocean City  
Call:  
Email to: mlw@bergerrealty.com

Scan to see Property page.

