

# Berger Realty

Since 1926

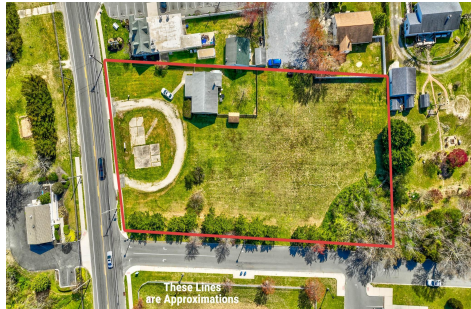


Berger Realty, Inc.  
3160 Asbury Avenue  
Ocean City, NJ 08226  
1-877-237-4371 / 609-399-0076  
info@bergerrealty.com



621 Route 9 S, Cape May Court House, NJ, 08210

Price \$599,000.00



### PROPERTY DETAILS

Total Rooms	
Bedrooms	0
Baths Full	
Baths Half	
Year Built	
Type	Commercial/Industrial
Block Number	326
Listing #	242730
Taxes	3840.00

### COMMENTS

*Exceptional Opportunity with this Acre parcel located in close proximity to booming downtown Cape May Court House. Positioned on a high-volume street in the Town Business Zone, this property has tremendous potential for an Investor or Business Owner! Potential uses, but not limited to, are as follows; retail, service uses, professional offices, banks, offices, health care ...*

### PROPERTY FEATURES

Exterior	Heating	Cooling	HotWater
Wood/Frame	Forced Air	Other (See Remarks)	Gas
Other (See Remarks)			
Water	Sewer		
City	City		

### CONTACT



Ask for Jeff Thompson  
Berger Realty Inc  
3160 Asbury Avenue, Ocean City  
Call: 609-780-0050  
Email to: jst@bergerrealty.com

Scan to see Property page.



# Berger Realty

Since 1926

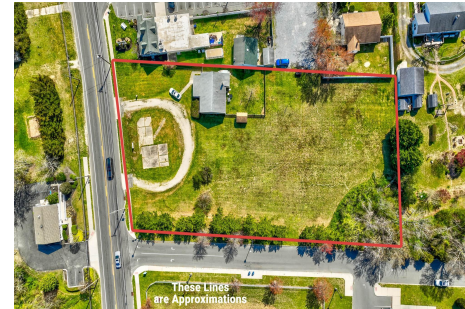


Berger Realty, Inc.  
3160 Asbury Avenue  
Ocean City, NJ 08226  
1-877-237-4371 / 609-399-0076  
info@bergerrealty.com



621 Route 9 S, Cape May Court House, NJ, 08210

Price \$599,000.00



### PROPERTY DETAILS

Total Rooms	
Bedrooms	0
Baths Full	
Baths Half	
Year Built	
Type	Commercial/Industrial
Block Number	326
Listing #	242730
Taxes	3840.00

### COMMENTS

*Exceptional Opportunity with this Acre parcel located in close proximity to booming downtown Cape May Court House. Positioned on a high-volume street in the Town Business Zone, this property has tremendous potential for an Investor or Business Owner! Potential uses, but not limited to, are as follows; retail, service uses, professional offices, banks, offices, health care ...*

### PROPERTY FEATURES

Exterior	Heating	Cooling	HotWater
Wood/Frame	Forced Air	Other (See Remarks)	Gas
Other (See Remarks)			
Water	Sewer		
City	City		

### CONTACT



Ask for Jeff Thompson  
Berger Realty Inc  
3160 Asbury Avenue, Ocean City  
Call: 609-780-0050  
Email to: jst@bergerrealty.com

Scan to see Property page.

