

# Berger Realty

Since 1926



Berger Realty, Inc.  
3160 Asbury Avenue  
Ocean City, NJ 08226  
1-877-237-4371 / 609-399-0076  
info@bergerrealty.com

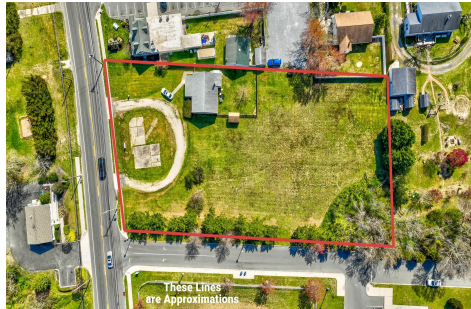


621 Route 9 S, Cape May Court House, NJ, 08210

Price \$599,000.00

### PROPERTY DETAILS

|              |                       |
|--------------|-----------------------|
| Total Rooms  |                       |
| Bedrooms     | 0                     |
| Baths Full   |                       |
| Baths Half   |                       |
| Year Built   |                       |
| Type         | Commercial/Industrial |
| Block Number | 326                   |
| Listing #    | 242730                |
| Taxes        | 3840.00               |



### COMMENTS

*Exceptional Opportunity with this Acre parcel located in close proximity to booming downtown Cape May Court House. Positioned on a high-volume street in the Town Business Zone, this property has tremendous potential for an Investor or Business Owner! Potential uses, but not limited to, are as follows; retail, service uses, professional offices, banks, offices, health care ...*

### PROPERTY FEATURES

|                     |            |                     |          |
|---------------------|------------|---------------------|----------|
| Exterior            | Heating    | Cooling             | HotWater |
| Wood/Frame          | Forced Air | Other (See Remarks) | Gas      |
| Other (See Remarks) |            |                     |          |
| Water               | Sewer      |                     |          |
| City                | City       |                     |          |

### CONTACT



Ask for Susan Goetz  
Berger Realty Inc  
3160 Asbury Avenue, Ocean City  
Call: 609-380-8757  
Email to: goe@bergerrealty.com

Scan to see Property page.



# Berger Realty

Since 1926



Berger Realty, Inc.  
3160 Asbury Avenue  
Ocean City, NJ 08226  
1-877-237-4371 / 609-399-0076  
info@bergerrealty.com

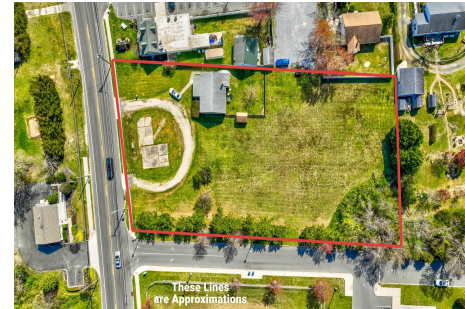


621 Route 9 S, Cape May Court House, NJ, 08210

Price \$599,000.00

### PROPERTY DETAILS

|              |                       |
|--------------|-----------------------|
| Total Rooms  |                       |
| Bedrooms     | 0                     |
| Baths Full   |                       |
| Baths Half   |                       |
| Year Built   |                       |
| Type         | Commercial/Industrial |
| Block Number | 326                   |
| Listing #    | 242730                |
| Taxes        | 3840.00               |



### COMMENTS

*Exceptional Opportunity with this Acre parcel located in close proximity to booming downtown Cape May Court House. Positioned on a high-volume street in the Town Business Zone, this property has tremendous potential for an Investor or Business Owner! Potential uses, but not limited to, are as follows; retail, service uses, professional offices, banks, offices, health care ...*

### PROPERTY FEATURES

|                     |            |                     |          |
|---------------------|------------|---------------------|----------|
| Exterior            | Heating    | Cooling             | HotWater |
| Wood/Frame          | Forced Air | Other (See Remarks) | Gas      |
| Other (See Remarks) |            |                     |          |
| Water               | Sewer      |                     |          |
| City                | City       |                     |          |

### CONTACT



Ask for Susan Goetz  
Berger Realty Inc  
3160 Asbury Avenue, Ocean City  
Call: 609-380-8757  
Email to: goe@bergerrealty.com

Scan to see Property page.

