

# Berger Realty

Since 1928



Berger Realty, Inc.  
3160 Asbury Avenue  
Ocean City, NJ 08226  
1-877-237-4371 / 609-399-0076  
info@bergerrealty.com



221 87th, Sea Isle City, NJ, 08243

Price \$635,000.00



### PROPERTY DETAILS

Total Rooms	5
Bedrooms	2
Baths Full	1
Baths Half	0
Year Built	
Type	Condo
Block Number	87 03
Listing #	242714
Taxes	1833.00

### COMMENTS

*Plan your escape to Sea Isle City! This cozy, newly renovated, and well-maintained Townsend's Inlet condo features two bedrooms and one bath, blending style and function seamlessly. Leave your car in the off-street dedicated parking space and enjoy a short walk to the beach, bay, restaurants, markets, and food shops. The seasonally guarded 85th Street beach is convenientl...*

### PROPERTY FEATURES

ParkingGarage	OtherRooms	AppliancesIncluded	AlsoIncluded
Parking Pad	Living Room	Range	Drapes
Assigned Parking	Eat In Kitchen	Oven	Curtains
Concrete Driveway	Dining Area	Microwave Oven	Shades
		Refrigerator	Furniture
		Washer	
		Dryer	
		Dishwasher	
		Stainless Steel	
		Appliance	

Heating	Cooling	HotWater	Water
Electric	Central Air	Electric	City

Sewer  
City

### CONTACT



Ask for Marki Lyn Warlow  
Berger Realty Inc  
3160 Asbury Avenue, Ocean City  
Call:  
Email to: mlw@bergerrealty.com

Scan to see Property page.



# Berger Realty

Since 1928



Berger Realty, Inc.  
3160 Asbury Avenue  
Ocean City, NJ 08226  
1-877-237-4371 / 609-399-0076  
info@bergerrealty.com



221 87th, Sea Isle City, NJ, 08243

Price \$635,000.00



### PROPERTY DETAILS

Total Rooms	5
Bedrooms	2
Baths Full	1
Baths Half	0
Year Built	
Type	Condo
Block Number	87 03
Listing #	242714
Taxes	1833.00

### COMMENTS

*Plan your escape to Sea Isle City! This cozy, newly renovated, and well-maintained Townsend's Inlet condo features two bedrooms and one bath, blending style and function seamlessly. Leave your car in the off-street dedicated parking space and enjoy a short walk to the beach, bay, restaurants, markets, and food shops. The seasonally guarded 85th Street beach is convenientl...*

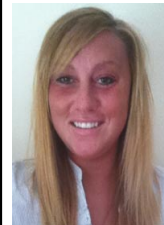
### PROPERTY FEATURES

ParkingGarage	OtherRooms	AppliancesIncluded	AlsoIncluded
Parking Pad	Living Room	Range	Drapes
Assigned Parking	Eat In Kitchen	Oven	Curtains
Concrete Driveway	Dining Area	Microwave Oven	Shades
		Refrigerator	Furniture
		Washer	
		Dryer	
		Dishwasher	
		Stainless Steel	
		Appliance	

Heating	Cooling	HotWater	Water
Electric	Central Air	Electric	City

Sewer  
City

### CONTACT



Ask for Marki Lyn Warlow  
Berger Realty Inc  
3160 Asbury Avenue, Ocean City  
Call:  
Email to: mlw@bergerrealty.com

Scan to see Property page.

