

# Berger Realty

Since 1926



Berger Realty, Inc.  
3160 Asbury Avenue  
Ocean City, NJ 08226  
1-877-237-4371 / 609-399-0076  
info@bergerrealty.com



Rt. 50, Petersburg, NJ, 08270

Price \$599,900.00

### PROPERTY DETAILS

Total Rooms	
Bedrooms	0
Baths Full	0
Baths Half	0
Year Built	
Type	Residential Vacant Lot
Block Number	414
Listing #	242605
Taxes	3987.00

### COMMENTS

Unlock a rare opportunity with this pristine 20.04-acre parcel of land nestled in desirable Upper Township, NJ. Just a short 15-minute drive to the beaches of Sea Isle City and Ocean City, this property offers the perfect balance of tranquility and convenience. Whether you're dreaming of crafting your private sanctuary or seeking an investment opportunity, this property p...

### PROPERTY FEATURES

### CONTACT



Ask for Margarita Kobilianets  
Berger Realty Inc  
3160 Asbury Avenue, Ocean City  
Call: 609-674-3417  
Email to: mak@bergerrealty.com

Scan to see Property page.



# Berger Realty

Since 1926



Berger Realty, Inc.  
3160 Asbury Avenue  
Ocean City, NJ 08226  
1-877-237-4371 / 609-399-0076  
info@bergerrealty.com



Rt. 50, Petersburg, NJ, 08270

Price \$599,900.00

### PROPERTY DETAILS

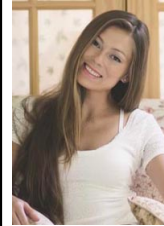
Total Rooms	
Bedrooms	0
Baths Full	0
Baths Half	0
Year Built	
Type	Residential Vacant Lot
Block Number	414
Listing #	242605
Taxes	3987.00

### COMMENTS

Unlock a rare opportunity with this pristine 20.04-acre parcel of land nestled in desirable Upper Township, NJ. Just a short 15-minute drive to the beaches of Sea Isle City and Ocean City, this property offers the perfect balance of tranquility and convenience. Whether you're dreaming of crafting your private sanctuary or seeking an investment opportunity, this property p...

### PROPERTY FEATURES

### CONTACT



Ask for Margarita Kobilianets  
Berger Realty Inc  
3160 Asbury Avenue, Ocean City  
Call: 609-674-3417  
Email to: mak@bergerrealty.com

Scan to see Property page.

