

Berger Realty

Since 1928



Berger Realty, Inc.
3160 Asbury Avenue
Ocean City, NJ 08226
1-877-237-4371 / 609-399-0076
info@bergerrealty.com



2 Pharo, Cape May, NJ, 08204

Price \$3,790,000.00

PROPERTY DETAILS

Total Rooms	10
Bedrooms	4
Baths Full	2
Baths Half	2
Year Built	2016
Type	Single Family
Block Number	1061.04
Listing #	242403
Taxes	9168.00

COMMENTS

Welcome to 2 Pharo, a 4-story, single family property, iconic to Cape May's Marina District and the surrounding waterfront enclave known as Spicers Creek. This unique property offers the opportunity to enjoy water views from each floor, spanning North, South, East and West, from sunrise to sunset. Planning by Fenwick Architects with steel posts and beams, brick and cedar ...

PROPERTY FEATURES

Exterior	OutsideFeatures	ParkingGarage	OtherRooms
Brick	Patio	Garage	Living Room
Concrete	Deck	Attached	Dining Room
Shingle	Enclosed/Covered Patio	Auto Door Opener	Kitchen
Wood	Grill	See Remarks	Eat-In-Kitchen
Other	Cable TV		Dining Area
Masonry Block	Outside Shower		Laundry/Utility Room
	See Remarks		Loft
	Security Camera		Great Room
			See Remarks
InteriorFeatures	AppliancesIncluded	AlsoIncluded	Heating
Bar	Range	Drapes	Gas Natural
Cathedral Ceilings	Microwave Oven	Curtains	Forced Air
Elevator	Refrigerator	Shades	Multi-Zoned
Fireplace- Gas	Washer	Blinds	
Wood Flooring	Dryer	Rugs	
Loft	Dishwasher	Furniture	
Security System	Burglar Alarm	See Remarks	
Skylight	Smoke/Fire Detector	Window Treatments	
Smoke/Fire Alarm	Stainless steel appliance		
Storage			
Walk in Closet			
Slab Flooring			
Tile Flooring			
Security Camera			
Cooling	HotWater	Water	Sewer
Central Air Condition	Gas- Natural	City	City
Multi Zoned			

Berger Realty

Since 1928



Berger Realty, Inc.
3160 Asbury Avenue
Ocean City, NJ 08226
1-877-237-4371 / 609-399-0076
info@bergerrealty.com



2 Pharo, Cape May, NJ, 08204

Price \$3,790,000.00

PROPERTY DETAILS

Total Rooms	10
Bedrooms	4
Baths Full	2
Baths Half	2
Year Built	2016
Type	Single Family
Block Number	1061.04
Listing #	242403
Taxes	9168.00

COMMENTS

Welcome to 2 Pharo, a 4-story, single family property, iconic to Cape May's Marina District and the surrounding waterfront enclave known as Spicers Creek. This unique property offers the opportunity to enjoy water views from each floor, spanning North, South, East and West, from sunrise to sunset. Planning by Fenwick Architects with steel posts and beams, brick and cedar ...

PROPERTY FEATURES

Exterior	OutsideFeatures	ParkingGarage	OtherRooms
Brick	Patio	Garage	Living Room
Concrete	Deck	Attached	Dining Room
Shingle	Enclosed/Covered Patio	Auto Door Opener	Kitchen
Wood	Grill	See Remarks	Eat-In-Kitchen
Other	Cable TV		Dining Area
Masonry Block	Outside Shower		Laundry/Utility Room
	See Remarks		Loft
	Security Camera		Great Room
			See Remarks
InteriorFeatures	AppliancesIncluded	AlsoIncluded	Heating
Bar	Range	Drapes	Gas Natural
Cathedral Ceilings	Microwave Oven	Curtains	Forced Air
Elevator	Refrigerator	Shades	Multi-Zoned
Fireplace- Gas	Washer	Blinds	
Wood Flooring	Dryer	Rugs	
Loft	Dishwasher	Furniture	
Security System	Burglar Alarm	See Remarks	
Skylight	Smoke/Fire Detector	Window Treatments	
Smoke/Fire Alarm	Stainless steel appliance		
Storage			
Walk in Closet			
Slab Flooring			
Tile Flooring			
Security Camera			
Cooling	HotWater	Water	Sewer
Central Air Condition	Gas- Natural	City	City
Multi Zoned			

CONTACT

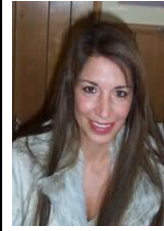


Ask for Joyce McMahon
Berger Realty Inc
3160 Asbury Avenue, Ocean City
Call:
Email to: jmm@bergerrealty.com

Scan to see Property page.



CONTACT



Ask for Joyce McMahon
Berger Realty Inc
3160 Asbury Avenue, Ocean City
Call:
Email to: jmm@bergerrealty.com

Scan to see Property page.

