

Berger Realty

Since 1928



Berger Realty, Inc.
3160 Asbury Avenue
Ocean City, NJ 08226
1-877-237-4371 / 609-399-0076
info@bergerrealty.com



760 US Route 47, South Dennis, NJ, 08210

Price \$299,000.00

PROPERTY DETAILS

Total Rooms	
Bedrooms	0
Baths Full	0
Baths Half	0
Year Built	
Type	Commercial Vacant Lot
Block Number	81.01
Listing #	242312
Taxes	3680.00

COMMENTS

Ready to open your own business? Maybe a couple commercial units with residential units above? Partially cleared vacant commercial lot. Two road fronts. One on State Route 47, the other on Court House - South Dennis Rd. Four acres, high and dry. Over 276 feet of road frontage on Route 47, and over 205 feet of road frontage on Court House - South Dennis Rd. Excellent opport...

PROPERTY FEATURES

CONTACT



Ask for Sara Varani
Berger Realty Inc
3160 Asbury Avenue, Ocean City
Call:
Email to: sev@bergerrealty.com

Scan to see Property page.



Berger Realty

Since 1928



Berger Realty, Inc.
3160 Asbury Avenue
Ocean City, NJ 08226
1-877-237-4371 / 609-399-0076
info@bergerrealty.com



760 US Route 47, South Dennis, NJ, 08210

Price \$299,000.00

PROPERTY DETAILS

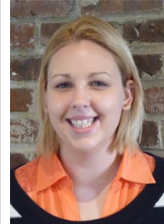
Total Rooms	
Bedrooms	0
Baths Full	0
Baths Half	0
Year Built	
Type	Commercial Vacant Lot
Block Number	81.01
Listing #	242312
Taxes	3680.00

COMMENTS

Ready to open your own business? Maybe a couple commercial units with residential units above? Partially cleared vacant commercial lot. Two road fronts. One on State Route 47, the other on Court House - South Dennis Rd. Four acres, high and dry. Over 276 feet of road frontage on Route 47, and over 205 feet of road frontage on Court House - South Dennis Rd. Excellent opport...

PROPERTY FEATURES

CONTACT



Ask for Sara Varani
Berger Realty Inc
3160 Asbury Avenue, Ocean City
Call:
Email to: sev@bergerrealty.com

Scan to see Property page.

