

# Berger Realty

Since 1926



Berger Realty, Inc.  
3160 Asbury Avenue  
Ocean City, NJ 08226  
1-877-237-4371 / 609-399-0076  
info@bergerrealty.com



760 US Route 47, South Dennis, NJ, 08210

Price \$299,000.00

### PROPERTY DETAILS

Total Rooms	
Bedrooms	0
Baths Full	0
Baths Half	0
Year Built	
Type	Commercial Vacant Lot
Block Number	81.01
Listing #	242312
Taxes	3680.00

### COMMENTS

Partially cleared vacant commercial lot. Two road fronts. One on State Route 47, the other on Court House - South Dennis Rd. Four acres, high and dry. Over 276 feet of road frontage on Route 47, and over 205 feet of road frontage on Court House - South Dennis Rd. Excellent business opportunity. Parcel map and VC zoning regs in Associated Docs...

### PROPERTY FEATURES

### CONTACT



Ask for Margarita Kobilianets  
Berger Realty Inc  
3160 Asbury Avenue, Ocean City  
Call: 609-674-3417  
Email to: mak@bergerrealty.com

Scan to see Property page.



# Berger Realty

Since 1926



Berger Realty, Inc.  
3160 Asbury Avenue  
Ocean City, NJ 08226  
1-877-237-4371 / 609-399-0076  
info@bergerrealty.com



760 US Route 47, South Dennis, NJ, 08210

Price \$299,000.00

### PROPERTY DETAILS

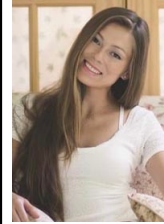
Total Rooms	
Bedrooms	0
Baths Full	0
Baths Half	0
Year Built	
Type	Commercial Vacant Lot
Block Number	81.01
Listing #	242312
Taxes	3680.00

### COMMENTS

Partially cleared vacant commercial lot. Two road fronts. One on State Route 47, the other on Court House - South Dennis Rd. Four acres, high and dry. Over 276 feet of road frontage on Route 47, and over 205 feet of road frontage on Court House - South Dennis Rd. Excellent business opportunity. Parcel map and VC zoning regs in Associated Docs...

### PROPERTY FEATURES

### CONTACT



Ask for Margarita Kobilianets  
Berger Realty Inc  
3160 Asbury Avenue, Ocean City  
Call: 609-674-3417  
Email to: mak@bergerrealty.com

Scan to see Property page.

