

# Berger Realty

Since 1928



Berger Realty, Inc.  
3160 Asbury Avenue  
Ocean City, NJ 08226  
1-877-237-4371 / 609-399-0076  
info@bergerrealty.com



1402 Route 9, Unit 151, Cape May Court House, NJ, 08210

Price \$255,000.00

### PROPERTY DETAILS

Total Rooms	5
Bedrooms	2
Baths Full	2
Baths Half	0
Year Built	0
Type	Manufactured
Block Number	1001
Listing #	242309
Taxes	



### COMMENTS

*Garden Lake Mobile Home Park, is a 55 and Over Adult Community. Located In Cape May Court House NJ. Just about 10 minutes away from the beaches of North Wildwood! 2 rights and over the Causeway, and you are on the Island! 15 Minutes away from Historic Victorian Cape May. We have pointed out the Location of the property, Now Let's mention the affordability of this well kep...*

### PROPERTY FEATURES

Exterior Steel Vinyl	OutsideFeatures Patio Deck Porch Storage Building	ParkingGarage Parking Pad 2 Car Concrete Driveway	OtherRooms Living Room Dining Room Kitchen Laundry/Utility Room Florida Room
InteriorFeatures Cathedral Ceilings Smoke/Fire Alarm Storage Laminate Flooring Vinyl Flooring	AppliancesIncluded Range Oven Self-Clean Oven Microwave Oven Refrigerator Washer Dryer Dishwasher Disposal Smoke/Fire Detector	AlsoIncluded Drapes Curtains Shades Blinds Rugs Furniture	Basement Crawl Space
Heating Gas Natural Forced Air	Cooling Central Air Condition Ceiling Fan	HotWater Gas- Natural	Water City
Sewer City			

### CONTACT

Ask for Margarita Kobilianets  
Berger Realty Inc

Scan to see Property page.

# Berger Realty

Since 1928



Berger Realty, Inc.  
3160 Asbury Avenue  
Ocean City, NJ 08226  
1-877-237-4371 / 609-399-0076  
info@bergerrealty.com



1402 Route 9, Unit 151, Cape May Court House, NJ, 08210

Price \$255,000.00

### PROPERTY DETAILS

Total Rooms	5
Bedrooms	2
Baths Full	2
Baths Half	0
Year Built	0
Type	Manufactured
Block Number	1001
Listing #	242309
Taxes	



### COMMENTS

*Garden Lake Mobile Home Park, is a 55 and Over Adult Community. Located In Cape May Court House NJ. Just about 10 minutes away from the beaches of North Wildwood! 2 rights and over the Causeway, and you are on the Island! 15 Minutes away from Historic Victorian Cape May. We have pointed out the Location of the property, Now Let's mention the affordability of this well kep...*

### PROPERTY FEATURES

Exterior Steel Vinyl	OutsideFeatures Patio Deck Porch Storage Building	ParkingGarage Parking Pad 2 Car Concrete Driveway	OtherRooms Living Room Dining Room Kitchen Laundry/Utility Room Florida Room
InteriorFeatures Cathedral Ceilings Smoke/Fire Alarm Storage Laminate Flooring Vinyl Flooring	AppliancesIncluded Range Oven Self-Clean Oven Microwave Oven Refrigerator Washer Dryer Dishwasher Disposal Smoke/Fire Detector	AlsoIncluded Drapes Curtains Shades Blinds Rugs Furniture	Basement Crawl Space
Heating Gas Natural Forced Air	Cooling Central Air Condition Ceiling Fan	HotWater Gas- Natural	Water City
Sewer City			

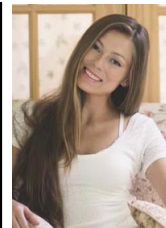
### CONTACT

Ask for Margarita Kobilianets  
Berger Realty Inc

Scan to see Property page.



**3160 Asbury Avenue, Ocean City**  
**Call: 609-674-3417**  
**Email to: mak@bergerrealty.com**



**3160 Asbury Avenue, Ocean City**  
**Call: 609-674-3417**  
**Email to: mak@bergerrealty.com**

