

# Berger Realty

Since 1926



Berger Realty, Inc.  
3160 Asbury Avenue  
Ocean City, NJ 08226  
1-877-237-4371 / 609-399-0076  
info@bergerrealty.com



845 Seashore, North Cape May, NJ, 08204

Price \$225,000.00

### PROPERTY DETAILS

|              |                        |
|--------------|------------------------|
| Total Rooms  |                        |
| Bedrooms     | 0                      |
| Baths Full   | 0                      |
| Baths Half   | 0                      |
| Year Built   |                        |
| Type         | Residential Vacant Lot |
| Block Number | 505                    |
| Listing #    | 242055                 |
| Taxes        | 1766.00                |

### COMMENTS

*Incredible opportunity! Lot is zoned residential, build a single family but could be a great location for a commercial project with city approval. This land offers convenient access to local amenities and Cape May's renowned beaches. \*\*Property lines are not exact and are for marketing purposes only\*\*...*

### PROPERTY FEATURES

### CONTACT



Ask for Sara Varani  
Berger Realty Inc  
3160 Asbury Avenue, Ocean City  
Call:  
Email to: sev@bergerrealty.com

Scan to see Property page.



# Berger Realty

Since 1926



Berger Realty, Inc.  
3160 Asbury Avenue  
Ocean City, NJ 08226  
1-877-237-4371 / 609-399-0076  
info@bergerrealty.com



845 Seashore, North Cape May, NJ, 08204

Price \$225,000.00

### PROPERTY DETAILS

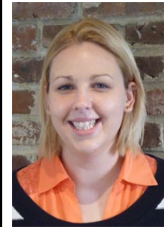
|              |                        |
|--------------|------------------------|
| Total Rooms  |                        |
| Bedrooms     | 0                      |
| Baths Full   | 0                      |
| Baths Half   | 0                      |
| Year Built   |                        |
| Type         | Residential Vacant Lot |
| Block Number | 505                    |
| Listing #    | 242055                 |
| Taxes        | 1766.00                |

### COMMENTS

*Incredible opportunity! Lot is zoned residential, build a single family but could be a great location for a commercial project with city approval. This land offers convenient access to local amenities and Cape May's renowned beaches. \*\*Property lines are not exact and are for marketing purposes only\*\*...*

### PROPERTY FEATURES

### CONTACT



Ask for Sara Varani  
Berger Realty Inc  
3160 Asbury Avenue, Ocean City  
Call:  
Email to: sev@bergerrealty.com

Scan to see Property page.

