

Berger Realty

Since 1926



Berger Realty, Inc.
3160 Asbury Avenue
Ocean City, NJ 08226
1-877-237-4371 / 609-399-0076
info@bergerrealty.com



5803 New Jersey, 2nd Floor - Unit 202 Or 203, Wildwood Crest, NJ, 08260

Price \$1,200.00



PROPERTY DETAILS

Total Rooms	
Bedrooms	0
Baths Full	1
Baths Half	
Year Built	
Type	Office/Professional
Block Number	NA
Listing #	242049
Taxes	

COMMENTS

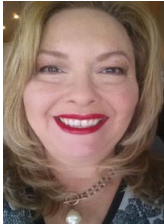
Commercial Rental Opportunity in Wildwood Crest Available for lease. 750 sq ft second-floor commercial unit located in the Business District area of Wildwood Crest. This versatile space is perfect for various professions business needs. Key Features: • Size: 750 sq. ft. • Location: Second floor • Parking: Two unassigned parking spots • Utilities: Gas and electric

...

PROPERTY FEATURES

Heating	Cooling	Water	Sewer
Gas Natural	Electric	City	City

CONTACT



Ask for Theresa Maina
Berger Realty Inc
3160 Asbury Avenue, Ocean City
Call: 609-703-7725
Email to: tam@bergerrealty.com

Scan to see Property page.



Berger Realty

Since 1926



Berger Realty, Inc.
3160 Asbury Avenue
Ocean City, NJ 08226
1-877-237-4371 / 609-399-0076
info@bergerrealty.com



5803 New Jersey, 2nd Floor - Unit 202 Or 203, Wildwood Crest, NJ, 08260

Price \$1,200.00



PROPERTY DETAILS

Total Rooms	
Bedrooms	0
Baths Full	1
Baths Half	
Year Built	
Type	Office/Professional
Block Number	NA
Listing #	242049
Taxes	

COMMENTS

Commercial Rental Opportunity in Wildwood Crest Available for lease. 750 sq ft second-floor commercial unit located in the Business District area of Wildwood Crest. This versatile space is perfect for various professions business needs. Key Features: • Size: 750 sq. ft. • Location: Second floor • Parking: Two unassigned parking spots • Utilities: Gas and electric

...

PROPERTY FEATURES

Heating	Cooling	Water	Sewer
Gas Natural	Electric	City	City

CONTACT



Ask for Theresa Maina
Berger Realty Inc
3160 Asbury Avenue, Ocean City
Call: 609-703-7725
Email to: tam@bergerrealty.com

Scan to see Property page.

