

# Berger Realty

Since 1928



Berger Realty, Inc.  
3160 Asbury Avenue  
Ocean City, NJ 08226  
1-877-237-4371 / 609-399-0076  
info@bergerrealty.com



1514 Velvento, Cape May, NJ, 08204

Price \$2,575,000.00

### PROPERTY DETAILS

Total Rooms	
Bedrooms	0
Baths Full	0
Baths Half	0
Year Built	
Type	Vacant Lot
Block Number	1176.02
Listing #	241920
Taxes	9200.00

### COMMENTS

*Prime corner residential lot in the prestigious Poverty Beach section of Cape May...Corner lot just 2 blocks to the beach with potential water views...Lot is 89' x 113'...City water and sewer, curbs, electric, cable, and gas...*

### PROPERTY FEATURES

### CONTACT



Ask for Lauren Greiner  
Berger Realty Inc  
3160 Asbury Avenue, Ocean City  
Call: 609-602-5960  
Email to: lmg@bergerrealty.com

Scan to see Property page.



# Berger Realty

Since 1928



Berger Realty, Inc.  
3160 Asbury Avenue  
Ocean City, NJ 08226  
1-877-237-4371 / 609-399-0076  
info@bergerrealty.com



1514 Velvento, Cape May, NJ, 08204

Price \$2,575,000.00

### PROPERTY DETAILS

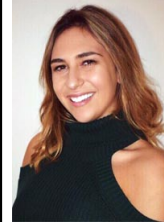
Total Rooms	
Bedrooms	0
Baths Full	0
Baths Half	0
Year Built	
Type	Vacant Lot
Block Number	1176.02
Listing #	241920
Taxes	9200.00

### COMMENTS

*Prime corner residential lot in the prestigious Poverty Beach section of Cape May...Corner lot just 2 blocks to the beach with potential water views...Lot is 89' x 113'...City water and sewer, curbs, electric, cable, and gas...*

### PROPERTY FEATURES

### CONTACT



Ask for Lauren Greiner  
Berger Realty Inc  
3160 Asbury Avenue, Ocean City  
Call: 609-602-5960  
Email to: lmg@bergerrealty.com

Scan to see Property page.

