

Berger Realty

Since 1926



Berger Realty, Inc.
3160 Asbury Avenue
Ocean City, NJ 08226
1-877-237-4371 / 609-399-0076
info@bergerrealty.com

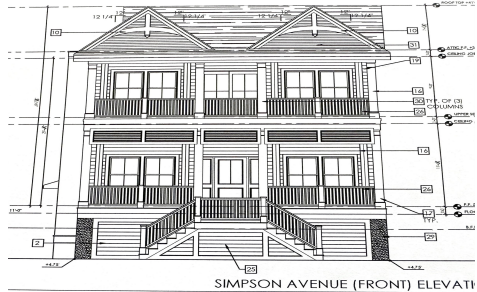


5535 Simpson, Ocean City, NJ, 08226

Price \$1,695,000.00

PROPERTY DETAILS

Total Rooms	12
Bedrooms	5
Baths Full	3
Baths Half	1
Year Built	2024
Type	Condo
Block Number	5505
Listing #	241792
Taxes	1.00



SIMPSON AVENUE (FRONT) ELEVATION

COMMENTS

This fantastic new construction project is located in the quiet south end of Ocean City. The second floor unit with 5 bedrooms and 3.5 baths will offer all the top end amenities you'd expect from this premier builder, such as Cortex flooring, a beautiful kitchen featuring stainless steel appliances, granite counter, and tile baths. All of this on a large 40' x 115' lot....

PROPERTY FEATURES

UnitFeatures	ParkingGarage	OtherRooms	AppliancesIncluded
Fireplace	Garage	Living Room	Range
Kitchen Island	Parking Pad	Dining Room	Self-Clean Oven
Wall To Wall Carpet	2 Car	Dining Area	Microwave Oven
Elevator	Attached	Laundry/Utility Room	Refrigerator
Cathedral Ceiling	Concrete Driveway	Great Room	Washer
			Dryer
			Dishwasher
			Disposal
			Stainless Steel
			Appliance
Heating	Cooling	HotWater	Water
Gas Natural	Central Air	Gas	Public
	Ceiling Fan		

Sewer
Public

CONTACT



Ask for George Cash
Berger Realty Inc
3160 Asbury Avenue, Ocean City
Call: 609-231-3586
Email to: gbc@bergerrealty.com

Scan to Party page.



Berger Realty

Since 1926



Berger Realty, Inc.
3160 Asbury Avenue
Ocean City, NJ 08226
1-877-237-4371 / 609-399-0076
info@bergerrealty.com



5535 Simpson, Ocean City, NJ, 08226

Price \$1,695,000.00

PROPERTY DETAILS

Total Rooms	12
Bedrooms	5
Baths Full	3
Baths Half	1
Year Built	2024
Type	Condo
Block Number	5505
Listing #	241792
Taxes	1.00



SIMPSON AVENUE (FRONT) ELEVATION

COMMENTS

This fantastic new construction project is located in the quiet south end of Ocean City. The second floor unit with 5 bedrooms and 3.5 baths will offer all the top end amenities you'd expect from this premier builder, such as Cortex flooring, a beautiful kitchen featuring stainless steel appliances, granite counter, and tile baths. All of this on a large 40' x 115' lot....

PROPERTY FEATURES

UnitFeatures	ParkingGarage	OtherRooms	AppliancesIncluded
Fireplace	Garage	Living Room	Range
Kitchen Island	Parking Pad	Dining Room	Self-Clean Oven
Wall To Wall Carpet	2 Car	Dining Area	Microwave Oven
Elevator	Attached	Laundry/Utility Room	Refrigerator
Cathedral Ceiling	Concrete Driveway	Great Room	Washer
			Dryer
			Dishwasher
			Disposal
			Stainless Steel
			Appliance
Heating	Cooling	HotWater	Water
Gas Natural	Central Air	Gas	Public
	Ceiling Fan		

Sewer
Public

CONTACT



Ask for George Cash
Berger Realty Inc
3160 Asbury Avenue, Ocean City
Call: 609-231-3586
Email to: gbc@bergerrealty.com

Scan to Party page.

