

Berger Realty

Since 1926



Berger Realty, Inc.
3160 Asbury Avenue
Ocean City, NJ 08226
1-877-237-4371 / 609-399-0076
info@bergerrealty.com



Berger Realty

Since 1926



Berger Realty, Inc.
3160 Asbury Avenue
Ocean City, NJ 08226
1-877-237-4371 / 609-399-0076
info@bergerrealty.com



619 Jonathan Hoffman, Cold Spring, NJ, 08204

Price \$839,000.00

619 Jonathan Hoffman, Cold Spring, NJ, 08204

Price \$839,000.00



PROPERTY DETAILS

Total Rooms	
Bedrooms	0
Baths Full	0
Baths Half	0
Year Built	
Type	Residential Vacant Lot
Block Number	741 04
Listing #	241715
Taxes	3213.00



PROPERTY DETAILS

Total Rooms	
Bedrooms	0
Baths Full	0
Baths Half	0
Year Built	
Type	Residential Vacant Lot
Block Number	741 04
Listing #	241715
Taxes	3213.00

COMMENTS

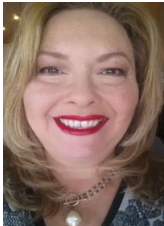
2.23 acre secluded lot across from the Cape May Canal. This backs up to 60 acres of preserved farmland occupied by Nauti Spirits, a Farm to Bottle Distillery. Minutes from Cape May's premier wineries. One mile to the Ferry Terminal and Bay Beaches. Two miles to downtown Cape May and the ocean beaches, marinas, restaurants and entertainment. This lot is not in a flood zon...

COMMENTS

2.23 acre secluded lot across from the Cape May Canal. This backs up to 60 acres of preserved farmland occupied by Nauti Spirits, a Farm to Bottle Distillery. Minutes from Cape May's premier wineries. One mile to the Ferry Terminal and Bay Beaches. Two miles to downtown Cape May and the ocean beaches, marinas, restaurants and entertainment. This lot is not in a flood zon...

PROPERTY FEATURES

CONTACT



Ask for Theresa Maina
Berger Realty Inc
3160 Asbury Avenue, Ocean City
Call: 609-703-7725
Email to: tam@bergerrealty.com

Scan to see Property page.



PROPERTY FEATURES

CONTACT



Ask for Theresa Maina
Berger Realty Inc
3160 Asbury Avenue, Ocean City
Call: 609-703-7725
Email to: tam@bergerrealty.com

Scan to see Property page.

