



Berger Realty, Inc.  
3160 Asbury Avenue  
Ocean City, NJ 08226  
1-877-237-4371 / 609-399-0076  
info@bergerrealty.com



619 Jonathan Hoffman, Cold Spring, NJ, 08204

Price \$759,000.00

#### PROPERTY DETAILS

Total Rooms	
Bedrooms	0
Baths Full	0
Baths Half	0
Year Built	
Type	Residential Vacant Lot
Block Number	741 04
Listing #	241715
Taxes	3213.00

#### COMMENTS

*2.23 acre secluded lot across from the Cape May Canal. This backs up to 60 acres of preserved farmland occupied by Nauti Spirits, a Farm to Bottle Distillery. Minutes from Cape May's premier wineries. One mile to the Ferry Terminal and Bay Beaches. Two miles to downtown Cape May and the ocean beaches, marinas, restaurants and entertainment. This lot is not in a flood zon...*

#### PROPERTY FEATURES

#### CONTACT



Ask for Sara Varani  
Berger Realty Inc  
3160 Asbury Avenue, Ocean City  
Call:  
Email to: sev@bergerrealty.com

Scan to see Property page.



Berger Realty, Inc.  
3160 Asbury Avenue  
Ocean City, NJ 08226  
1-877-237-4371 / 609-399-0076  
info@bergerrealty.com



619 Jonathan Hoffman, Cold Spring, NJ, 08204

Price \$759,000.00

#### PROPERTY DETAILS

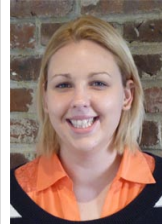
Total Rooms	
Bedrooms	0
Baths Full	0
Baths Half	0
Year Built	
Type	Residential Vacant Lot
Block Number	741 04
Listing #	241715
Taxes	3213.00

#### COMMENTS

*2.23 acre secluded lot across from the Cape May Canal. This backs up to 60 acres of preserved farmland occupied by Nauti Spirits, a Farm to Bottle Distillery. Minutes from Cape May's premier wineries. One mile to the Ferry Terminal and Bay Beaches. Two miles to downtown Cape May and the ocean beaches, marinas, restaurants and entertainment. This lot is not in a flood zon...*

#### PROPERTY FEATURES

#### CONTACT



Ask for Sara Varani  
Berger Realty Inc  
3160 Asbury Avenue, Ocean City  
Call:  
Email to: sev@bergerrealty.com

Scan to see Property page.

