

Berger Realty

Since 1928



Berger Realty, Inc.
3160 Asbury Avenue
Ocean City, NJ 08226
1-877-237-4371 / 609-399-0076
info@bergerrealty.com



3000 Pacific, Wildwood, NJ, 08260

Price \$1,490,123.00

PROPERTY DETAILS

Total Rooms	
Bedrooms	0
Baths Full	
Baths Half	
Year Built	
Type	Commercial/Industrial
Block Number	217
Listing #	241699
Taxes	9012.00

COMMENTS

This is a turn-key business in the Wildwood Redevelopment Zone providing extra owner incentives and seven possible income streams. There is 4800 square feet of retail space with additional cottage, detached garage with a second floor and parking in the rear. This sale includes: 3000 Pacific Avenue, longstanding attorney office. Month-to-month lease. 3002 Pacific Avenue, Li...

PROPERTY FEATURES

ParkingGarage	Heating	Cooling	HotWater
6 To 10 Spaces	Gas Natural	Central Air Conditioning	Gas
Water	Sewer		
Public	Public		

CONTACT



Ask for Marki Lyn Warlow
Berger Realty Inc
3160 Asbury Avenue, Ocean City
Call:
Email to: mlw@bergerrealty.com

Scan to see Property page.



Berger Realty

Since 1928



Berger Realty, Inc.
3160 Asbury Avenue
Ocean City, NJ 08226
1-877-237-4371 / 609-399-0076
info@bergerrealty.com



3000 Pacific, Wildwood, NJ, 08260

Price \$1,490,123.00

PROPERTY DETAILS

Total Rooms	
Bedrooms	0
Baths Full	
Baths Half	
Year Built	
Type	Commercial/Industrial
Block Number	217
Listing #	241699
Taxes	9012.00

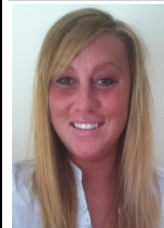
COMMENTS

This is a turn-key business in the Wildwood Redevelopment Zone providing extra owner incentives and seven possible income streams. There is 4800 square feet of retail space with additional cottage, detached garage with a second floor and parking in the rear. This sale includes: 3000 Pacific Avenue, longstanding attorney office. Month-to-month lease. 3002 Pacific Avenue, Li...

PROPERTY FEATURES

ParkingGarage	Heating	Cooling	HotWater
6 To 10 Spaces	Gas Natural	Central Air Conditioning	Gas
Water	Sewer		
Public	Public		

CONTACT



Ask for Marki Lyn Warlow
Berger Realty Inc
3160 Asbury Avenue, Ocean City
Call:
Email to: mlw@bergerrealty.com

Scan to see Property page.

