

Berger Realty

Since 1928



Berger Realty, Inc.
3160 Asbury Avenue
Ocean City, NJ 08226
1-877-237-4371 / 609-399-0076
info@bergerrealty.com



716 Jonathan Hoffman, Lower Township, NJ, 08260

Price \$1,450,000.00

PROPERTY DETAILS

Total Rooms	
Bedrooms	0
Baths Full	0
Baths Half	0
Year Built	
Type	Residential Vacant Lot
Block Number	747.01
Listing #	241577
Taxes	8891.00



COMMENTS

716 Jonathan Hoffman Road can be your opportunity to own 286' of waterfront property along the intercoastal waterway. This 1.06 acres of cleared land can receive a substantial single family home with lots of room for pool, pool cabana, pole barn, etc. This property is on the north side of the West Cape May Bridge and close enough to ride your bike in and out of Cape May ...

PROPERTY FEATURES

CONTACT



Ask for Lauren Greiner
Berger Realty Inc
3160 Asbury Avenue, Ocean City
Call: 609-602-5960
Email to: lmg@bergerrealty.com

Scan to see Property page.



Berger Realty

Since 1928



Berger Realty, Inc.
3160 Asbury Avenue
Ocean City, NJ 08226
1-877-237-4371 / 609-399-0076
info@bergerrealty.com



716 Jonathan Hoffman, Lower Township, NJ, 08260

Price \$1,450,000.00

PROPERTY DETAILS

Total Rooms	
Bedrooms	0
Baths Full	0
Baths Half	0
Year Built	
Type	Residential Vacant Lot
Block Number	747.01
Listing #	241577
Taxes	8891.00

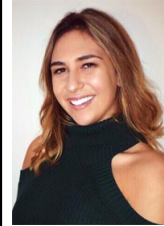


COMMENTS

716 Jonathan Hoffman Road can be your opportunity to own 286' of waterfront property along the intercoastal waterway. This 1.06 acres of cleared land can receive a substantial single family home with lots of room for pool, pool cabana, pole barn, etc. This property is on the north side of the West Cape May Bridge and close enough to ride your bike in and out of Cape May ...

PROPERTY FEATURES

CONTACT



Ask for Lauren Greiner
Berger Realty Inc
3160 Asbury Avenue, Ocean City
Call: 609-602-5960
Email to: lmg@bergerrealty.com

Scan to see Property page.

