

# Berger Realty

Since 1926

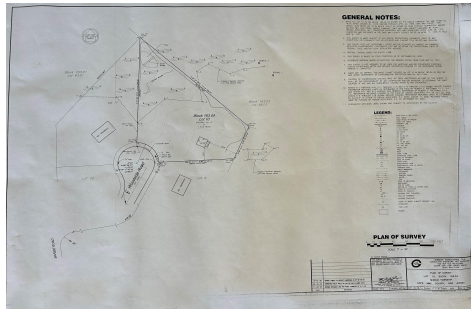


Berger Realty, Inc.  
3160 Asbury Avenue  
Ocean City, NJ 08226  
1-877-237-4371 / 609-399-0076  
info@bergerrealty.com



17 Woodside, Cape May Court House, NJ, 08210

Price \$249,900.00



### PROPERTY DETAILS

<b>Total Rooms</b>	
<b>Bedrooms</b>	0
<b>Baths Full</b>	0
<b>Baths Half</b>	0
<b>Year Built</b>	
<b>Type</b>	Residential Vacant Lot
<b>Block Number</b>	163.04
<b>Listing #</b>	241572
<b>Taxes</b>	2670.00

### COMMENTS

*Residential Single Family Lot ready to build your dream home. Permits for a 3BR 2BA single family home were previously obtained by the seller. Lot is fully cleared, located in a private setting on the end of a cul-de-sac, not far from the center of town....*

### PROPERTY FEATURES

### CONTACT



Ask for Graham Ginn  
Berger Realty Inc  
3160 Asbury Avenue, Ocean City  
Call: 609-602-4884  
Email to: [gmg@bergerrealty.com](mailto:gmg@bergerrealty.com)  
<https://www.ocnj.com>

Scan to see Property page.



# Berger Realty

Since 1926

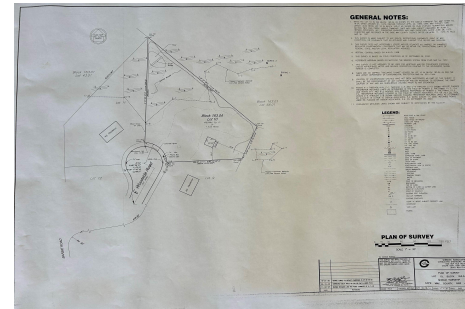


Berger Realty, Inc.  
3160 Asbury Avenue  
Ocean City, NJ 08226  
1-877-237-4371 / 609-399-0076  
info@bergerrealty.com



17 Woodside, Cape May Court House, NJ, 08210

Price \$249,900.00



### PROPERTY DETAILS

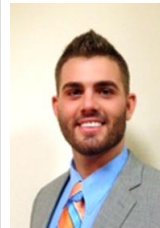
<b>Total Rooms</b>	
<b>Bedrooms</b>	0
<b>Baths Full</b>	0
<b>Baths Half</b>	0
<b>Year Built</b>	
<b>Type</b>	Residential Vacant Lot
<b>Block Number</b>	163.04
<b>Listing #</b>	241572
<b>Taxes</b>	2670.00

### COMMENTS

*Residential Single Family Lot ready to build your dream home. Permits for a 3BR 2BA single family home were previously obtained by the seller. Lot is fully cleared, located in a private setting on the end of a cul-de-sac, not far from the center of town....*

### PROPERTY FEATURES

### CONTACT



Ask for Graham Ginn  
Berger Realty Inc  
3160 Asbury Avenue, Ocean City  
Call: 609-602-4884  
Email to: [gmg@bergerrealty.com](mailto:gmg@bergerrealty.com)  
<https://www.ocnj.com>

Scan to see Property page.

