

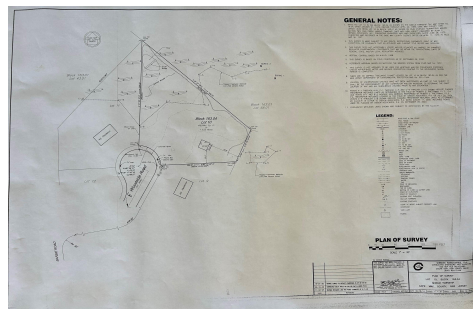


Berger Realty, Inc.  
3160 Asbury Avenue  
Ocean City, NJ 08226  
1-877-237-4371 / 609-399-0076  
info@bergerrealty.com



17 Woodside, Cape May Court House, NJ, 08210

Price \$249,900.00



#### PROPERTY DETAILS

Total Rooms	0
Bedrooms	0
Baths Full	0
Baths Half	0
Year Built	
Type	Residential Vacant Lot
Block Number	163.04
Listing #	241572
Taxes	2670.00

#### COMMENTS

*Residential Single Family Lot ready to build your dream home. Permits for a 3BR 2BA single family home were previously obtained by the seller. Lot is fully cleared, located in a private setting on the end of a cul-de-sac, not far from the center of town....*

#### PROPERTY FEATURES

#### CONTACT



Ask for Domenic Ballerini  
Berger Realty Inc  
3160 Asbury Avenue, Ocean City  
Call: 856-524-8122  
Email to: dvb@bergerrealty.com

Scan to see Property page.

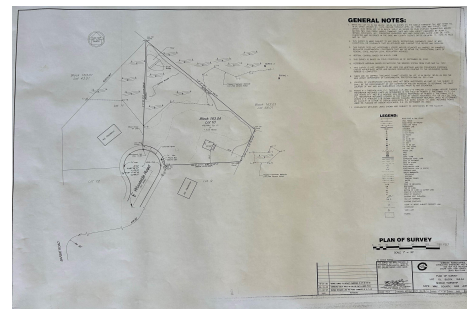


Berger Realty, Inc.  
3160 Asbury Avenue  
Ocean City, NJ 08226  
1-877-237-4371 / 609-399-0076  
info@bergerrealty.com



17 Woodside, Cape May Court House, NJ, 08210

Price \$249,900.00



#### PROPERTY DETAILS

Total Rooms	0
Bedrooms	0
Baths Full	0
Baths Half	0
Year Built	
Type	Residential Vacant Lot
Block Number	163.04
Listing #	241572
Taxes	2670.00

#### COMMENTS

*Residential Single Family Lot ready to build your dream home. Permits for a 3BR 2BA single family home were previously obtained by the seller. Lot is fully cleared, located in a private setting on the end of a cul-de-sac, not far from the center of town....*

#### PROPERTY FEATURES

#### CONTACT



Ask for Domenic Ballerini  
Berger Realty Inc  
3160 Asbury Avenue, Ocean City  
Call: 856-524-8122  
Email to: dvb@bergerrealty.com

Scan to see Property page.

