

Berger Realty

Since 1926



Berger Realty, Inc.
3160 Asbury Avenue
Ocean City, NJ 08226
1-877-237-4371 / 609-399-0076
info@bergerrealty.com



112 Rosemary, Wildwood Crest, NJ, 08260

Price \$699,900.00



PROPERTY DETAILS

Total Rooms	7
Bedrooms	3
Baths Full	2
Baths Half	0
Year Built	
Type	Condo
Block Number	51
Listing #	241505
Taxes	4995.00

COMMENTS

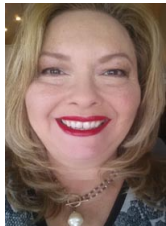
Experience the extras that make this top floor 3 bedroom, 2 bathroom condominium a unique shore property. Located within a short walk to the beach and bay this builder's unit features an open floor plan kitchen with custom cabinetry and Porcelain tile floors. The large living area features gas Fireplace with custom limestone surround and mantel. The front deck is perfect ...

PROPERTY FEATURES

UnitFeatures	ParkingGarage	OtherRooms	AppliancesIncluded
Fireplace	Garage	Living Room	Range
Kitchen Island	Parking Pad	Kitchen	Oven
Wall To Wall Carpet	3 Car	Den/TV Room	Microwave Oven
Elevator	Assigned Parking	Eat In Kitchen	Refrigerator
Skylight	Concrete Driveway	Dining Area	Washer
Cathedral Ceiling		Storage Space	Dryer
Tile Floors			Dishwasher
			Disposal
Heating	Cooling	HotWater	Water
Gas Natural	Central Air	Gas	City
Forced Air	Ceiling Fan		

Sewer
City

CONTACT



Ask for Theresa Maina
Berger Realty Inc
3160 Asbury Avenue, Ocean City
Call: 609-703-7725
Email to: tam@bergerrealty.com

Scan to see Property page.



Berger Realty

Since 1926



Berger Realty, Inc.
3160 Asbury Avenue
Ocean City, NJ 08226
1-877-237-4371 / 609-399-0076
info@bergerrealty.com



112 Rosemary, Wildwood Crest, NJ, 08260

Price \$699,900.00



PROPERTY DETAILS

Total Rooms	7
Bedrooms	3
Baths Full	2
Baths Half	0
Year Built	
Type	Condo
Block Number	51
Listing #	241505
Taxes	4995.00

COMMENTS

Experience the extras that make this top floor 3 bedroom, 2 bathroom condominium a unique shore property. Located within a short walk to the beach and bay this builder's unit features an open floor plan kitchen with custom cabinetry and Porcelain tile floors. The large living area features gas Fireplace with custom limestone surround and mantel. The front deck is perfect ...

PROPERTY FEATURES

UnitFeatures	ParkingGarage	OtherRooms	AppliancesIncluded
Fireplace	Garage	Living Room	Range
Kitchen Island	Parking Pad	Kitchen	Oven
Wall To Wall Carpet	3 Car	Den/TV Room	Microwave Oven
Elevator	Assigned Parking	Eat In Kitchen	Refrigerator
Skylight	Concrete Driveway	Dining Area	Washer
Cathedral Ceiling		Storage Space	Dryer
Tile Floors			Dishwasher
			Disposal
Heating	Cooling	HotWater	Water
Gas Natural	Central Air	Gas	City
Forced Air	Ceiling Fan		

Sewer
City

CONTACT



Ask for Theresa Maina
Berger Realty Inc
3160 Asbury Avenue, Ocean City
Call: 609-703-7725
Email to: tam@bergerrealty.com

Scan to see Property page.

