

Berger Realty

Since 1928



Berger Realty, Inc.
3160 Asbury Avenue
Ocean City, NJ 08226
1-877-237-4371 / 609-399-0076
info@bergerrealty.com



601 Route 9, Court House Commons - 2nd Floor Office Suite,
Cape May Court House, NJ, 08210

Price \$810.00



PROPERTY DETAILS

Total Rooms	
Bedrooms	0
Baths Full	
Baths Half	1
Year Built	
Type	Office/Professional
Block Number	326
Listing #	241481
Taxes	

COMMENTS

Available is an private executive corner office within a shared office suite on the second floor of an attractive professional office building with high visibility along Route 9 in Cape May Court House. The secured private office offers 2 rooms: one large office space as well as a second space for meeting space, file storage or staff. The \$810/mo rent includes all utili...

PROPERTY FEATURES

Exterior Brick Face	ParkingGarage Off Street	Heating Gas Propane Forced Air	Cooling Central Air Conditioning
Water City	Sewer City		

CONTACT



Ask for Joyce McMahon
Berger Realty Inc
3160 Asbury Avenue, Ocean City
Call:
Email to: jmm@bergerrealty.com

Scan to see Property page.



Berger Realty

Since 1928



Berger Realty, Inc.
3160 Asbury Avenue
Ocean City, NJ 08226
1-877-237-4371 / 609-399-0076
info@bergerrealty.com



601 Route 9, Court House Commons - 2nd Floor Office Suite,
Cape May Court House, NJ, 08210

Price \$810.00



PROPERTY DETAILS

Total Rooms	
Bedrooms	0
Baths Full	
Baths Half	1
Year Built	
Type	Office/Professional
Block Number	326
Listing #	241481
Taxes	

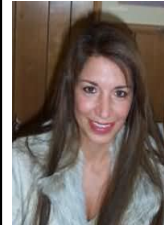
COMMENTS

Available is an private executive corner office within a shared office suite on the second floor of an attractive professional office building with high visibility along Route 9 in Cape May Court House. The secured private office offers 2 rooms: one large office space as well as a second space for meeting space, file storage or staff. The \$810/mo rent includes all utili...

PROPERTY FEATURES

Exterior Brick Face	ParkingGarage Off Street	Heating Gas Propane Forced Air	Cooling Central Air Conditioning
Water City	Sewer City		

CONTACT



Ask for Joyce McMahon
Berger Realty Inc
3160 Asbury Avenue, Ocean City
Call:
Email to: jmm@bergerrealty.com

Scan to see Property page.

