

# Berger Realty

Since 1926



Berger Realty, Inc.  
3160 Asbury Avenue  
Ocean City, NJ 08226  
1-877-237-4371 / 609-399-0076  
info@bergerrealty.com

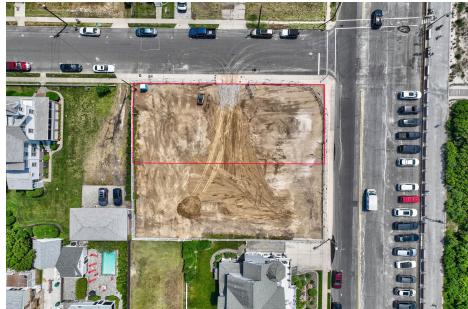


301 Beach, Cape May, NJ, 08204

Price \$3,675,000.00

### PROPERTY DETAILS

Total Rooms	
Bedrooms	0
Baths Full	0
Baths Half	0
Year Built	
Type	Residential Vacant Lot
Block Number	1014
Listing #	241460
Taxes	38700.00



### COMMENTS

Unique opportunity to acquire a residential cleared lot located on Beach Avenue, in Cape May. Corner location with beach and water views. Within close proximity to Cape May's shopping district, restaurants and all of Cape May's offerings. Future driveway for new home to be on First Avenue. Taxes to be determined. One of the owner's is a NJ licensed real estate salespers...

### PROPERTY FEATURES

### CONTACT



Ask for Jeremy Kershbaumer  
Berger Realty Inc  
3160 Asbury Avenue, Ocean City  
Call: 609-367-3669  
Email to: jek@bergerrealty.com

Scan to see Property page.



# Berger Realty

Since 1926



Berger Realty, Inc.  
3160 Asbury Avenue  
Ocean City, NJ 08226  
1-877-237-4371 / 609-399-0076  
info@bergerrealty.com

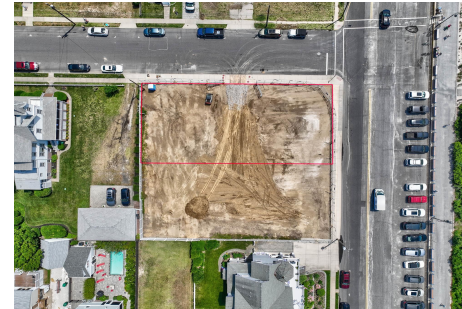


301 Beach, Cape May, NJ, 08204

Price \$3,675,000.00

### PROPERTY DETAILS

Total Rooms	
Bedrooms	0
Baths Full	0
Baths Half	0
Year Built	
Type	Residential Vacant Lot
Block Number	1014
Listing #	241460
Taxes	38700.00

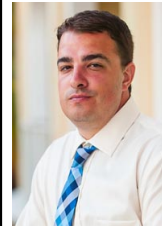


### COMMENTS

Unique opportunity to acquire a residential cleared lot located on Beach Avenue, in Cape May. Corner location with beach and water views. Within close proximity to Cape May's shopping district, restaurants and all of Cape May's offerings. Future driveway for new home to be on First Avenue. Taxes to be determined. One of the owner's is a NJ licensed real estate salespers...

### PROPERTY FEATURES

### CONTACT



Ask for Jeremy Kershbaumer  
Berger Realty Inc  
3160 Asbury Avenue, Ocean City  
Call: 609-367-3669  
Email to: jek@bergerrealty.com

Scan to see Property page.

