

Berger Realty

Since 1928



Berger Realty, Inc.
3160 Asbury Avenue
Ocean City, NJ 08226
1-877-237-4371 / 609-399-0076
info@bergerrealty.com



3802 Landis, Sea Isle City, NJ, 08243

Price \$1,690,000.00



PROPERTY DETAILS

Total Rooms	
Bedrooms	0
Baths Full	0
Baths Half	0
Year Built	
Type	Mixed Use
Block Number	38.03
Listing #	241403
Taxes	6286.00

COMMENTS

ONE OF A KIND UNIQUE PROPERTY !....AFFECTIONATELY KNOWN AS THE TAJ MAHAL THIS CHARMING HOME BUILT IN 1920 HASSERVED AS A GATHERING PLACE FOR MANY GENERATIONS OF IT'S CURRENT OWNERS FAMILY AND FRIENDS. LISTED WITH SEAISLE CITY TAX ASSESSOR AS 4 UNITS. CONSISTING OF 14 BEDROOMS 5 BATHS WITH A LARGE FRONT PORCH. NEEDS SOMETLTC TO BRING THIS BEAUTY BACK TO ITS ORIGINAL CONDITI...

PROPERTY FEATURES

OutsideFeatures	ParkingGarage	Heating	Cooling
Porch	3 Car	No Heating	Central Air
Outside Shower			
HotWater	Water	Sewer	
Gas	Public	Public	

CONTACT



Ask for Sara Varani
Berger Realty Inc
3160 Asbury Avenue, Ocean City
Call:
Email to: sev@bergerrealty.com

Scan to see Property page.



Berger Realty

Since 1928



Berger Realty, Inc.
3160 Asbury Avenue
Ocean City, NJ 08226
1-877-237-4371 / 609-399-0076
info@bergerrealty.com



3802 Landis, Sea Isle City, NJ, 08243

Price \$1,690,000.00



PROPERTY DETAILS

Total Rooms	
Bedrooms	0
Baths Full	0
Baths Half	0
Year Built	
Type	Mixed Use
Block Number	38.03
Listing #	241403
Taxes	6286.00

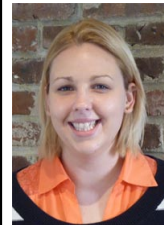
COMMENTS

ONE OF A KIND UNIQUE PROPERTY !....AFFECTIONATELY KNOWN AS THE TAJ MAHAL THIS CHARMING HOME BUILT IN 1920 HASSERVED AS A GATHERING PLACE FOR MANY GENERATIONS OF IT'S CURRENT OWNERS FAMILY AND FRIENDS. LISTED WITH SEAISLE CITY TAX ASSESSOR AS 4 UNITS. CONSISTING OF 14 BEDROOMS 5 BATHS WITH A LARGE FRONT PORCH. NEEDS SOMETLTC TO BRING THIS BEAUTY BACK TO ITS ORIGINAL CONDITI...

PROPERTY FEATURES

OutsideFeatures	ParkingGarage	Heating	Cooling
Porch	3 Car	No Heating	Central Air
Outside Shower			
HotWater	Water	Sewer	
Gas	Public	Public	

CONTACT



Ask for Sara Varani
Berger Realty Inc
3160 Asbury Avenue, Ocean City
Call:
Email to: sev@bergerrealty.com

Scan to see Property page.

