

# Berger Realty

Since 1926



Berger Realty, Inc.  
3160 Asbury Avenue  
Ocean City, NJ 08226  
1-877-237-4371 / 609-399-0076  
info@bergerrealty.com



6028 Peach, Mays Landing, NJ, 08330

Price \$50,000.00

### PROPERTY DETAILS

Total Rooms	
Bedrooms	0
Baths Full	0
Baths Half	0
Year Built	
Type	Vacant Lot
Block Number	865
Listing #	241372
Taxes	1344.00



SJSRMLS

### COMMENTS

Beautiful residential lot central to everything including shopping, restaurants, Atlantic City and Wildlife Parks. Quiet tree-lined street. Great neighborhood. Buyer responsible for all permits and approvals. Seller will allow for due diligence period. Survey in Assoc. Docs...

### PROPERTY FEATURES

### CONTACT



Ask for Joyce McMahon  
Berger Realty Inc  
3160 Asbury Avenue, Ocean City  
Call:  
Email to: [jmm@bergerrealty.com](mailto:jmm@bergerrealty.com)

Scan to see Property page.



# Berger Realty

Since 1926



Berger Realty, Inc.  
3160 Asbury Avenue  
Ocean City, NJ 08226  
1-877-237-4371 / 609-399-0076  
info@bergerrealty.com



6028 Peach, Mays Landing, NJ, 08330

Price \$50,000.00

### PROPERTY DETAILS

Total Rooms	
Bedrooms	0
Baths Full	0
Baths Half	0
Year Built	
Type	Vacant Lot
Block Number	865
Listing #	241372
Taxes	1344.00



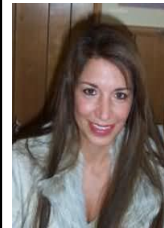
SJSRMLS

### COMMENTS

Beautiful residential lot central to everything including shopping, restaurants, Atlantic City and Wildlife Parks. Quiet tree-lined street. Great neighborhood. Buyer responsible for all permits and approvals. Seller will allow for due diligence period. Survey in Assoc. Docs...

### PROPERTY FEATURES

### CONTACT



Ask for Joyce McMahon  
Berger Realty Inc  
3160 Asbury Avenue, Ocean City  
Call:  
Email to: [jmm@bergerrealty.com](mailto:jmm@bergerrealty.com)

Scan to see Property page.

