

Berger Realty

Since 1926



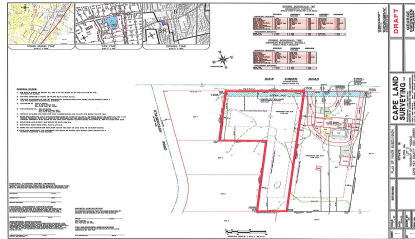
Berger Realty, Inc.
3160 Asbury Avenue
Ocean City, NJ 08226
1-877-237-4371 / 609-399-0076
info@bergerrealty.com



445 Dias Creek, Cape May Court House, NJ, 08210

Price \$179,000.00

PROPERTY DETAILS



Total Rooms	
Bedrooms	0
Baths Full	0
Baths Half	0
Year Built	
Type	Residential Vacant Lot
Block Number	166
Listing #	241293
Taxes	

COMMENTS

Newly subdivided one-acre single family lot with 195' frontage on Dias Creek Road. Close to the center of town. Enjoy all that Cape May Court House has to offer. Restaurants, shopping and the bike path that runs all through the county including to the Cape May County Zoo and Park. Great location to custom build the home of your dreams....

PROPERTY FEATURES

CONTACT



Ask for Jeff Thompson
Berger Realty Inc
3160 Asbury Avenue, Ocean City
Call: 609-780-0050
Email to: jst@bergerrealty.com

Scan to see Property page.



Berger Realty

Since 1926



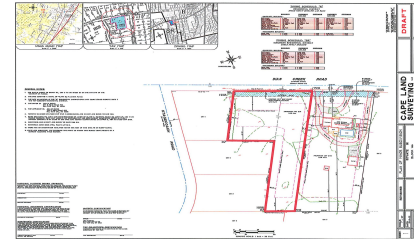
Berger Realty, Inc.
3160 Asbury Avenue
Ocean City, NJ 08226
1-877-237-4371 / 609-399-0076
info@bergerrealty.com



445 Dias Creek, Cape May Court House, NJ, 08210

Price \$179,000.00

PROPERTY DETAILS



Total Rooms	
Bedrooms	0
Baths Full	0
Baths Half	0
Year Built	
Type	Residential Vacant Lot
Block Number	166
Listing #	241293
Taxes	

COMMENTS

Newly subdivided one-acre single family lot with 195' frontage on Dias Creek Road. Close to the center of town. Enjoy all that Cape May Court House has to offer. Restaurants, shopping and the bike path that runs all through the county including to the Cape May County Zoo and Park. Great location to custom build the home of your dreams....

PROPERTY FEATURES

CONTACT



Ask for Jeff Thompson
Berger Realty Inc
3160 Asbury Avenue, Ocean City
Call: 609-780-0050
Email to: jst@bergerrealty.com

Scan to see Property page.

