

# Berger Realty

Since 1926



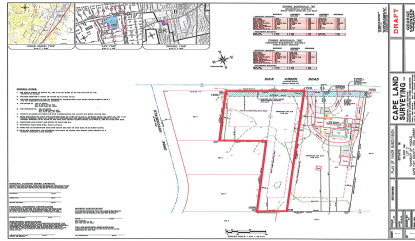
Berger Realty, Inc.  
3160 Asbury Avenue  
Ocean City, NJ 08226  
1-877-237-4371 / 609-399-0076  
info@bergerrealty.com



445 Dias Creek, Cape May Court House, NJ, 08210

Price \$179,000.00

### PROPERTY DETAILS



|              |                        |
|--------------|------------------------|
| Total Rooms  | 0                      |
| Bedrooms     | 0                      |
| Baths Full   | 0                      |
| Baths Half   | 0                      |
| Year Built   |                        |
| Type         | Residential Vacant Lot |
| Block Number | 166                    |
| Listing #    | 241293                 |
| Taxes        |                        |

### COMMENTS

Newly subdivided one-acre single family lot with 195' frontage on Dias Creek Road. Close to the center of town. Enjoy all that Cape May Court House has to offer. Restaurants, shopping and the bike path that runs all through the county including to the Cape May County Zoo and Park. Great location to custom build the home of your dreams....

### PROPERTY FEATURES

### CONTACT



Ask for George Cash  
Berger Realty Inc  
3160 Asbury Avenue, Ocean City  
Call: 609-231-3586  
Email to: gbc@bergerrealty.com

Scan to see Property page.



# Berger Realty

Since 1926



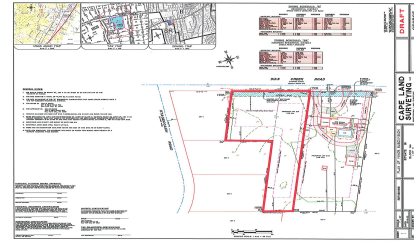
Berger Realty, Inc.  
3160 Asbury Avenue  
Ocean City, NJ 08226  
1-877-237-4371 / 609-399-0076  
info@bergerrealty.com



445 Dias Creek, Cape May Court House, NJ, 08210

Price \$179,000.00

### PROPERTY DETAILS



|              |                        |
|--------------|------------------------|
| Total Rooms  | 0                      |
| Bedrooms     | 0                      |
| Baths Full   | 0                      |
| Baths Half   | 0                      |
| Year Built   |                        |
| Type         | Residential Vacant Lot |
| Block Number | 166                    |
| Listing #    | 241293                 |
| Taxes        |                        |

### COMMENTS

Newly subdivided one-acre single family lot with 195' frontage on Dias Creek Road. Close to the center of town. Enjoy all that Cape May Court House has to offer. Restaurants, shopping and the bike path that runs all through the county including to the Cape May County Zoo and Park. Great location to custom build the home of your dreams....

### PROPERTY FEATURES

### CONTACT



Ask for George Cash  
Berger Realty Inc  
3160 Asbury Avenue, Ocean City  
Call: 609-231-3586  
Email to: gbc@bergerrealty.com

Scan to see Property page.

