

# Berger Realty

Since 1926



Berger Realty, Inc.  
3160 Asbury Avenue  
Ocean City, NJ 08226  
1-877-237-4371 / 609-399-0076  
info@bergerrealty.com

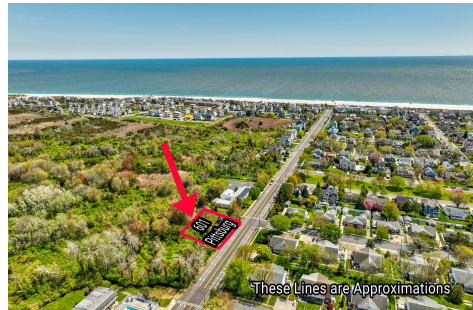


601 Pittsburgh, Cape May, NJ, 08204

Price \$1,500,000.00

### PROPERTY DETAILS

|              |                        |
|--------------|------------------------|
| Total Rooms  |                        |
| Bedrooms     | 0                      |
| Baths Full   | 0                      |
| Baths Half   | 0                      |
| Year Built   |                        |
| Type         | Residential Vacant Lot |
| Block Number | 1167                   |
| Listing #    | 241233                 |
| Taxes        | 541.00                 |



### COMMENTS

*Sizeable 125' x 125' single family home building lot within close proximity to the beach and Marina District adjacent to protected habitat. The Seller is working with an engineer to obtain a letter of interpretation from The State of New Jersey...*

### PROPERTY FEATURES

### CONTACT



Ask for John Sweeney  
Berger Realty Inc  
3160 Asbury Avenue, Ocean City  
Call: 570-620-7677  
Email to: [jjs@bergerrealty.com](mailto:jjs@bergerrealty.com)

Scan to see Property page.



# Berger Realty

Since 1926



Berger Realty, Inc.  
3160 Asbury Avenue  
Ocean City, NJ 08226  
1-877-237-4371 / 609-399-0076  
info@bergerrealty.com

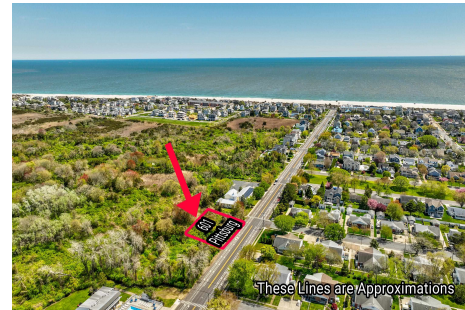


601 Pittsburgh, Cape May, NJ, 08204

Price \$1,500,000.00

### PROPERTY DETAILS

|              |                        |
|--------------|------------------------|
| Total Rooms  |                        |
| Bedrooms     | 0                      |
| Baths Full   | 0                      |
| Baths Half   | 0                      |
| Year Built   |                        |
| Type         | Residential Vacant Lot |
| Block Number | 1167                   |
| Listing #    | 241233                 |
| Taxes        | 541.00                 |



### COMMENTS

*Sizeable 125' x 125' single family home building lot within close proximity to the beach and Marina District adjacent to protected habitat. The Seller is working with an engineer to obtain a letter of interpretation from The State of New Jersey...*

### PROPERTY FEATURES

### CONTACT



Ask for John Sweeney  
Berger Realty Inc  
3160 Asbury Avenue, Ocean City  
Call: 570-620-7677  
Email to: [jjs@bergerrealty.com](mailto:jjs@bergerrealty.com)

Scan to see Property page.

