



2108 Dune, Avalon, NJ, 08202

Price \$7,750,000.00

PROPERTY DETAILS

Total Rooms	
Bedrooms	0
Baths Full	0
Baths Half	0
Year Built	
Type	Mixed Use
Block Number	21.04
Listing #	241157
Taxes	18307.00



COMMENTS

Welcome to the heart of Avalon, known as the Circle Pizza Plaza, a prime investment opportunity in the best seashore community New Jersey has to offer. This unique property sits on just over half an acre of land and features five commercial and four residential spaces, all fully rented and generating steady income. It is currently home to one 4 bedroom 2 bath, one 4 bedroo...

PROPERTY FEATURES

OutsideFeatures	ParkingGarage	Heating	Cooling
Deck	Assigned Parking	Gas Natural	Central Air
Outside Shower		Electric	
		Forced Air	
		Hot Water	
HotWater	Water	Sewer	
Electric	City	City	
Gas			

CONTACT



Ask for Lauren Greiner
Berger Realty Inc
3160 Asbury Avenue, Ocean City
Call: 609-602-5960
Email to: lmg@bergerrealty.com

Scan to see Property page.



2108 Dune, Avalon, NJ, 08202

Price \$7,750,000.00

PROPERTY DETAILS

Total Rooms	
Bedrooms	0
Baths Full	0
Baths Half	0
Year Built	
Type	Mixed Use
Block Number	21.04
Listing #	241157
Taxes	18307.00



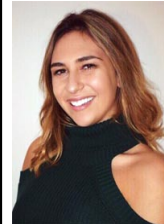
COMMENTS

Welcome to the heart of Avalon, known as the Circle Pizza Plaza, a prime investment opportunity in the best seashore community New Jersey has to offer. This unique property sits on just over half an acre of land and features five commercial and four residential spaces, all fully rented and generating steady income. It is currently home to one 4 bedroom 2 bath, one 4 bedroo...

PROPERTY FEATURES

OutsideFeatures	ParkingGarage	Heating	Cooling
Deck	Assigned Parking	Gas Natural	Central Air
Outside Shower		Electric	
		Forced Air	
		Hot Water	
HotWater	Water	Sewer	
Electric	City	City	
Gas			

CONTACT



Ask for Lauren Greiner
Berger Realty Inc
3160 Asbury Avenue, Ocean City
Call: 609-602-5960
Email to: lmg@bergerrealty.com

Scan to see Property page.

