

# Berger Realty

Since 1926



Berger Realty, Inc.  
3160 Asbury Avenue  
Ocean City, NJ 08226  
1-877-237-4371 / 609-399-0076  
info@bergerrealty.com

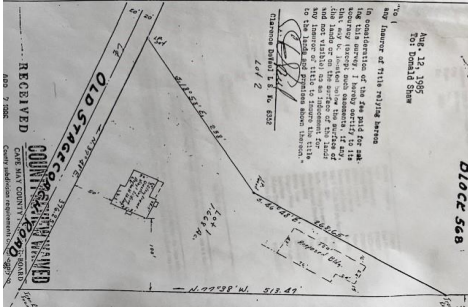


1299 Stagecoach, Palermo, NJ, 08223

Price \$299,000.00

### PROPERTY DETAILS

Total Rooms	0
Bedrooms	0
Baths Full	0
Baths Half	0
Year Built	
Type	Residential Vacant Lot
Block Number	568
Listing #	240865
Taxes	1610.00



### COMMENTS

Commercial lot in a great location in Upper Township. Property has a foundation which might be useable. Second old foundation on the property that had never been used....

### PROPERTY FEATURES

### CONTACT



Ask for Lureen "Lani" Calcara  
Berger Realty Inc  
3160 Asbury Avenue, Ocean City  
Call: 609-705-7342  
Email to: luc@bergerrealty.com

Scan to see Property page.



# Berger Realty

Since 1926



Berger Realty, Inc.  
3160 Asbury Avenue  
Ocean City, NJ 08226  
1-877-237-4371 / 609-399-0076  
info@bergerrealty.com

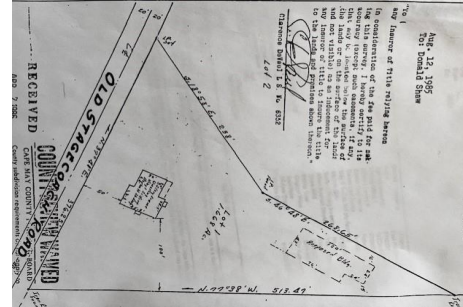


1299 Stagecoach, Palermo, NJ, 08223

Price \$299,000.00

### PROPERTY DETAILS

Total Rooms	0
Bedrooms	0
Baths Full	0
Baths Half	0
Year Built	
Type	Residential Vacant Lot
Block Number	568
Listing #	240865
Taxes	1610.00

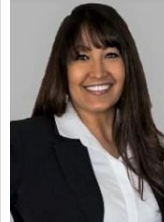


### COMMENTS

Commercial lot in a great location in Upper Township. Property has a foundation which might be useable. Second old foundation on the property that had never been used....

### PROPERTY FEATURES

### CONTACT



Ask for Lureen "Lani" Calcara  
Berger Realty Inc  
3160 Asbury Avenue, Ocean City  
Call: 609-705-7342  
Email to: luc@bergerrealty.com

Scan to see Property page.

